

Introduction to french national poster

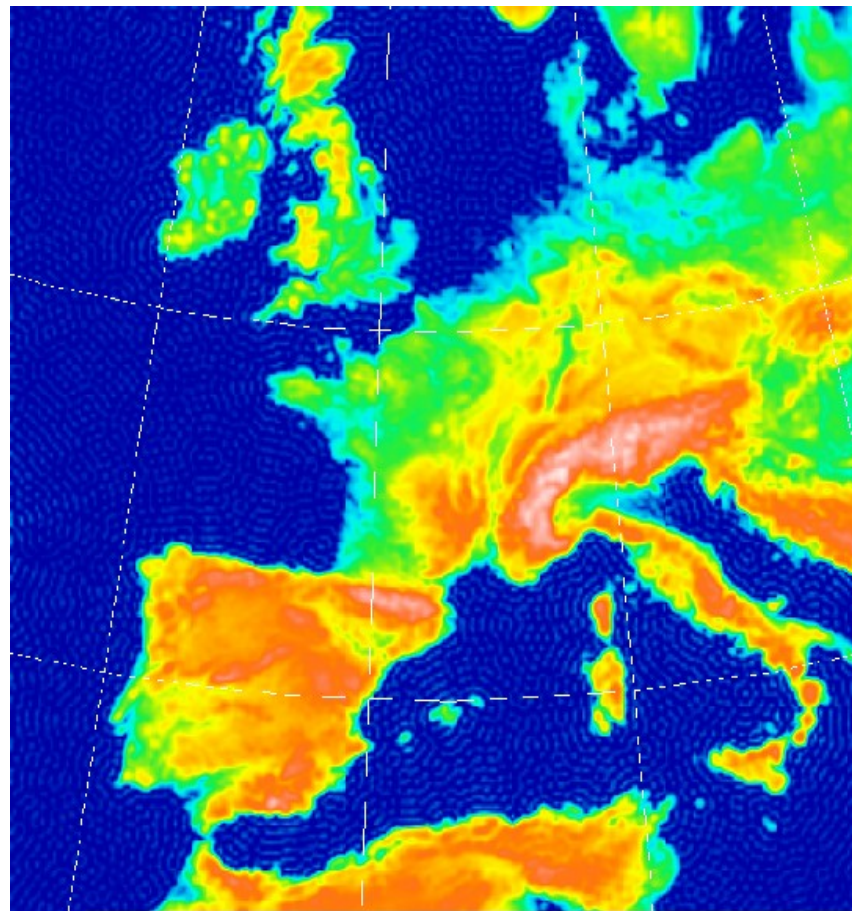
Météo-France
Contributions from the CNRM/GMAP staff



METEO FRANCE
Toujours un temps d'avance

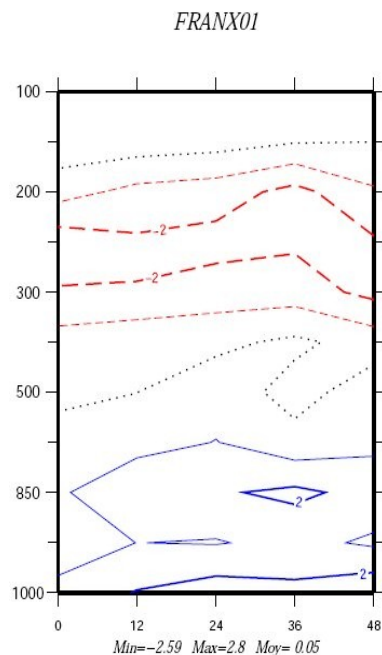
General features about Aladin France

- Description of operational setup
- Assimilated observations

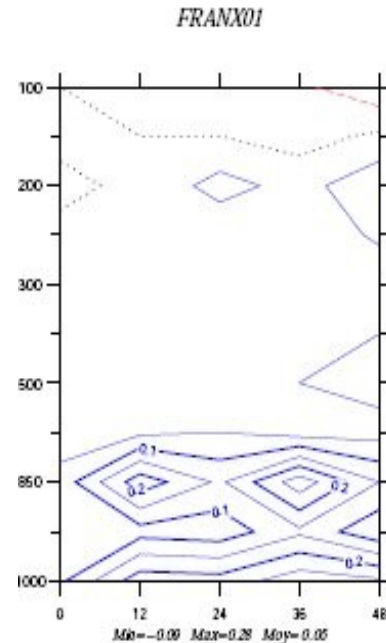


Current E-suite

- Introduction of new physical parametrizations and new settings for existing ones
- Promising results (still under test)



Moisture

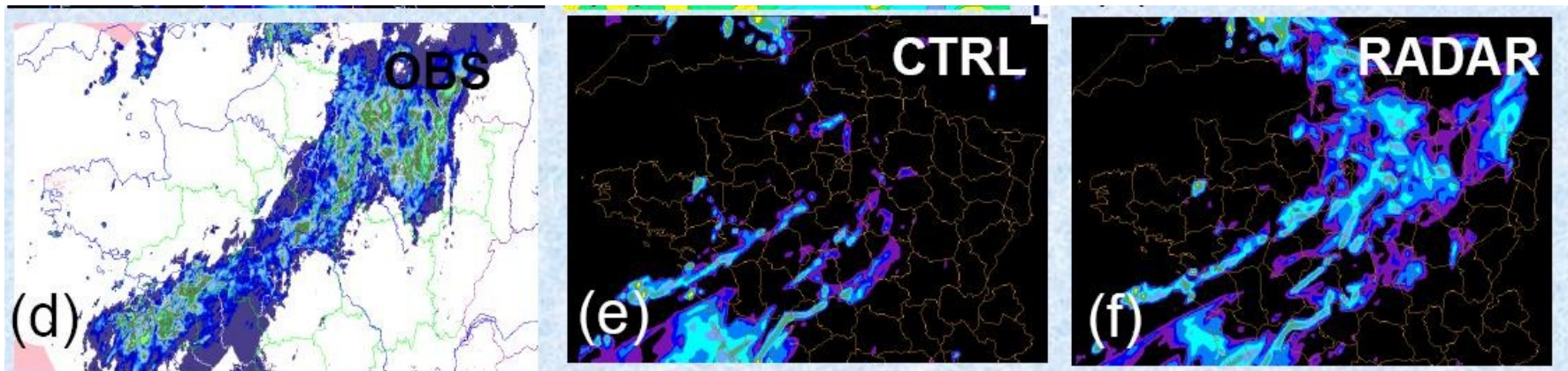


Temperature



Ongoing research on assimilation of radar data in Arome

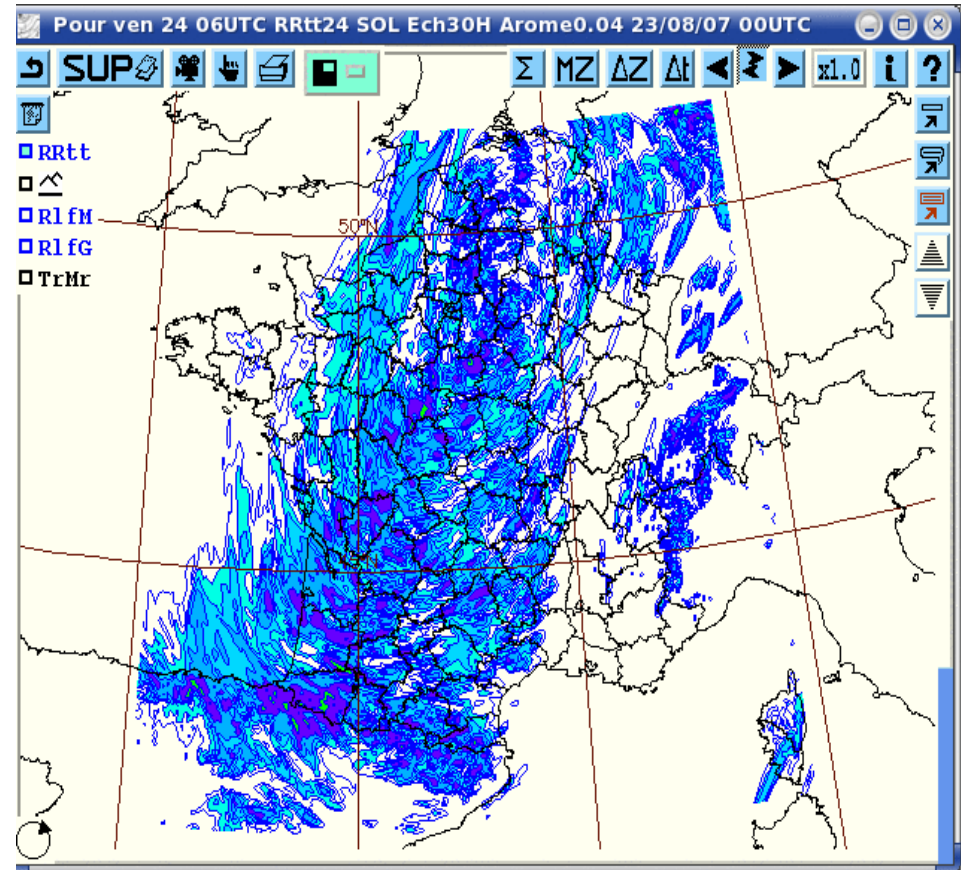
- Assimilation of radar reflectivities
- Assimilation of Doppler wind
- Cases studies



Example of impact of assimilation of radar reflectivities on Arome's forecast

Pre-operational settings of Arome

- Operational setup
- Assimilation
- Scores





METEO FRANCE

Toujours un temps d'avance