



Recent updates of the Norwegian operational NORLAMEPS

Trygve Aspelien, John Bjørnar Bremnes, Inger-Lise Frogner,
Trond Iversen and Ole Vignes

Ewglam, Madrid, October 2008



NORLAMEPS = Combined ECMWF-TEPS & LAMEPS

A double model, double analysis 42 member ensemble [2 times (20 + control). Updated 13. February 2008.

TEPS: ECMWF cy32r3 (6. Nov. 2007), Targeted 48h TE SV T42,
Control:T799L91, 20 ens. members: T399L62, 12utc+72h

LAMEPS: HIRLAM 7.1.4, 12km, 60 levels, 3hourly LBC,
Control: HIRLAM 3DVar, 20 ens members: downscaled TEPS
10: straco, 10 rkkf, 18utc+60h, 06utc+48h

LAMEPS

Integration domain



TEPS - target

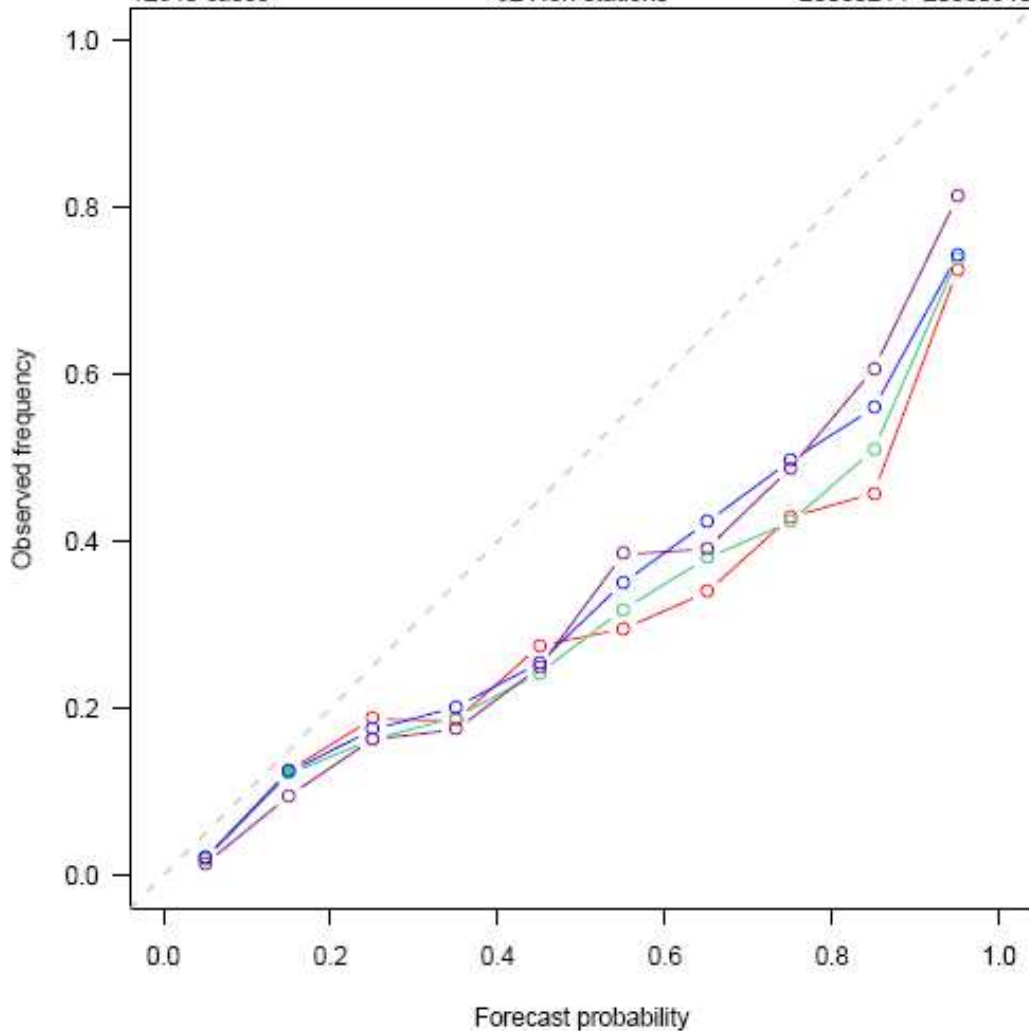
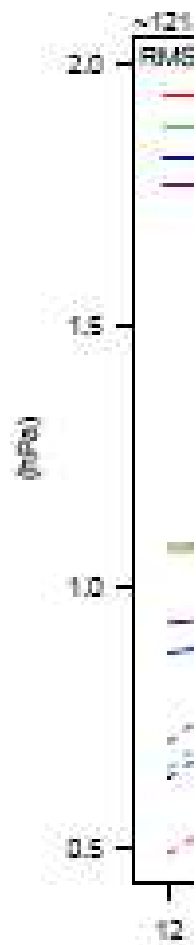
Selected verification results: Feb.14th - Sept.10th



Ensemble skill vs. spread

Daily precipitation > 5 mm

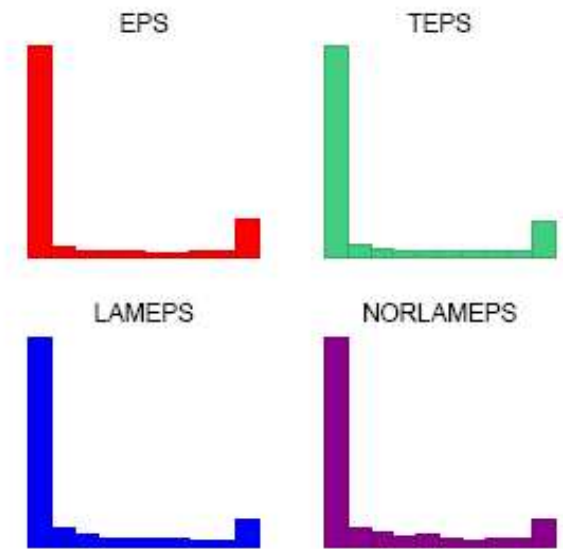
12640 cases 62 Nor. stations 20080214-20080910



- EPS 12+42 UTC
- TEPS 12+42 UTC
- LAMEPS 18+36 UTC
- NORLAMEPS 18+36 UTC

- well calibrated
- not calibrated

	BS	BSS	ROC
EPS	0.09	29.2	0.92
TEPS	0.088	30.5	0.918
LAMEPS	0.089	29.2	0.91
NORLAMEPS	0.081	36.2	0.928

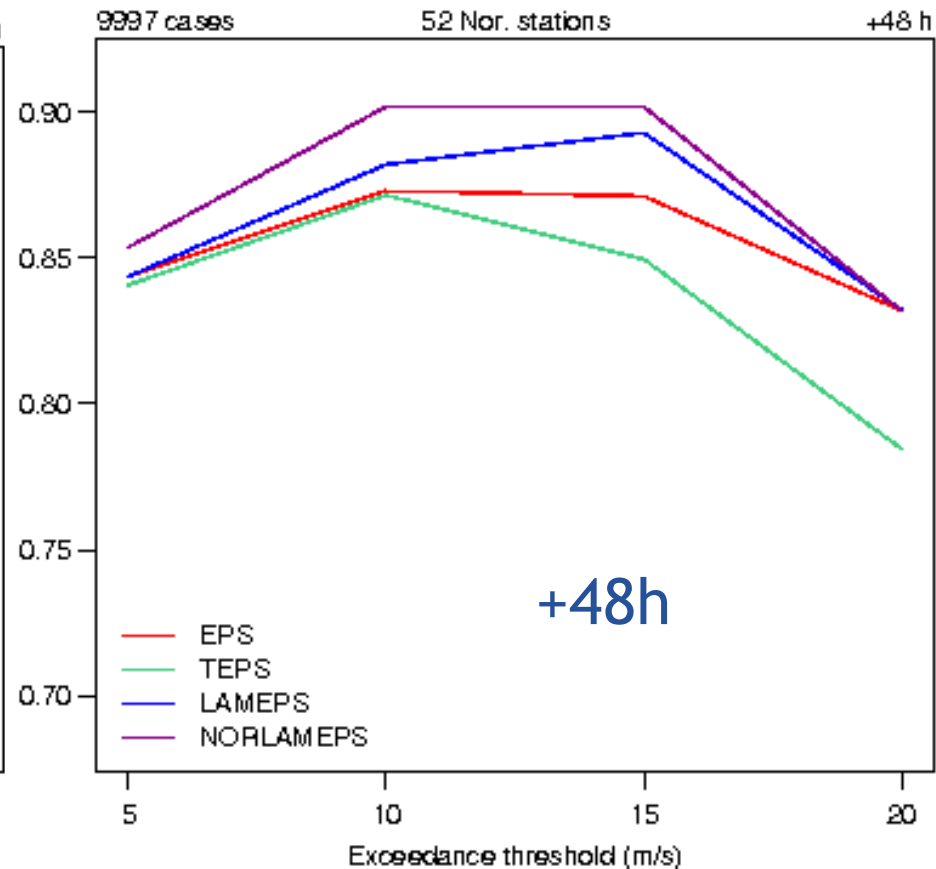
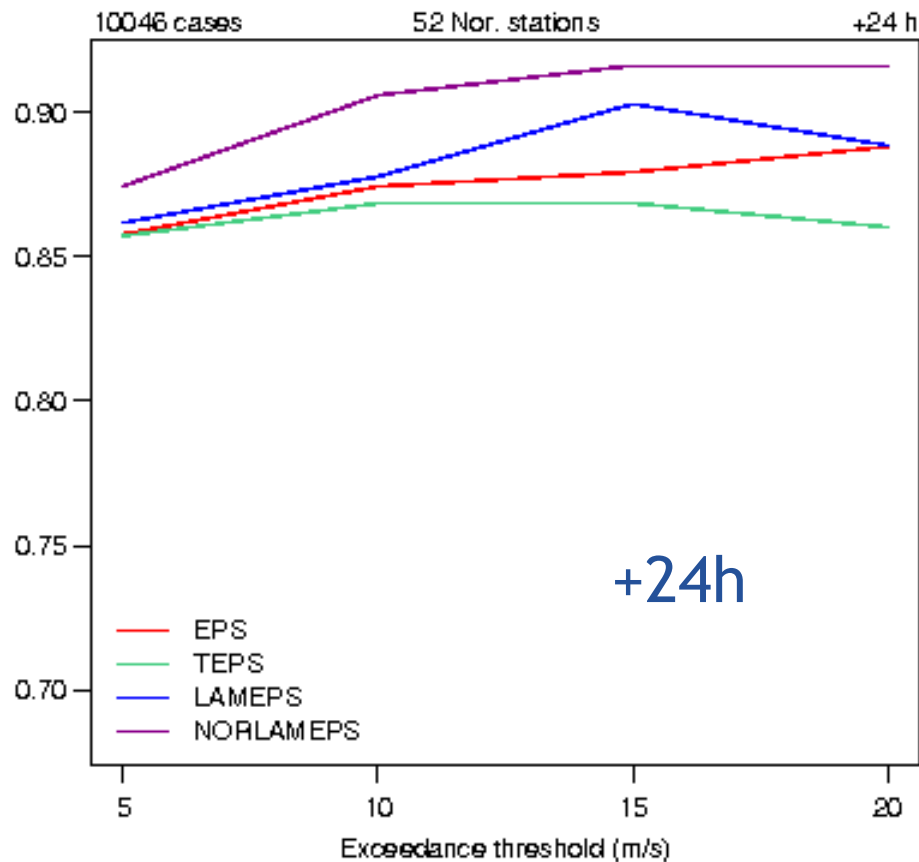


Selected verification results: Feb.14th - Sept.10th



ROC area : Wind speed
20080214-20080910

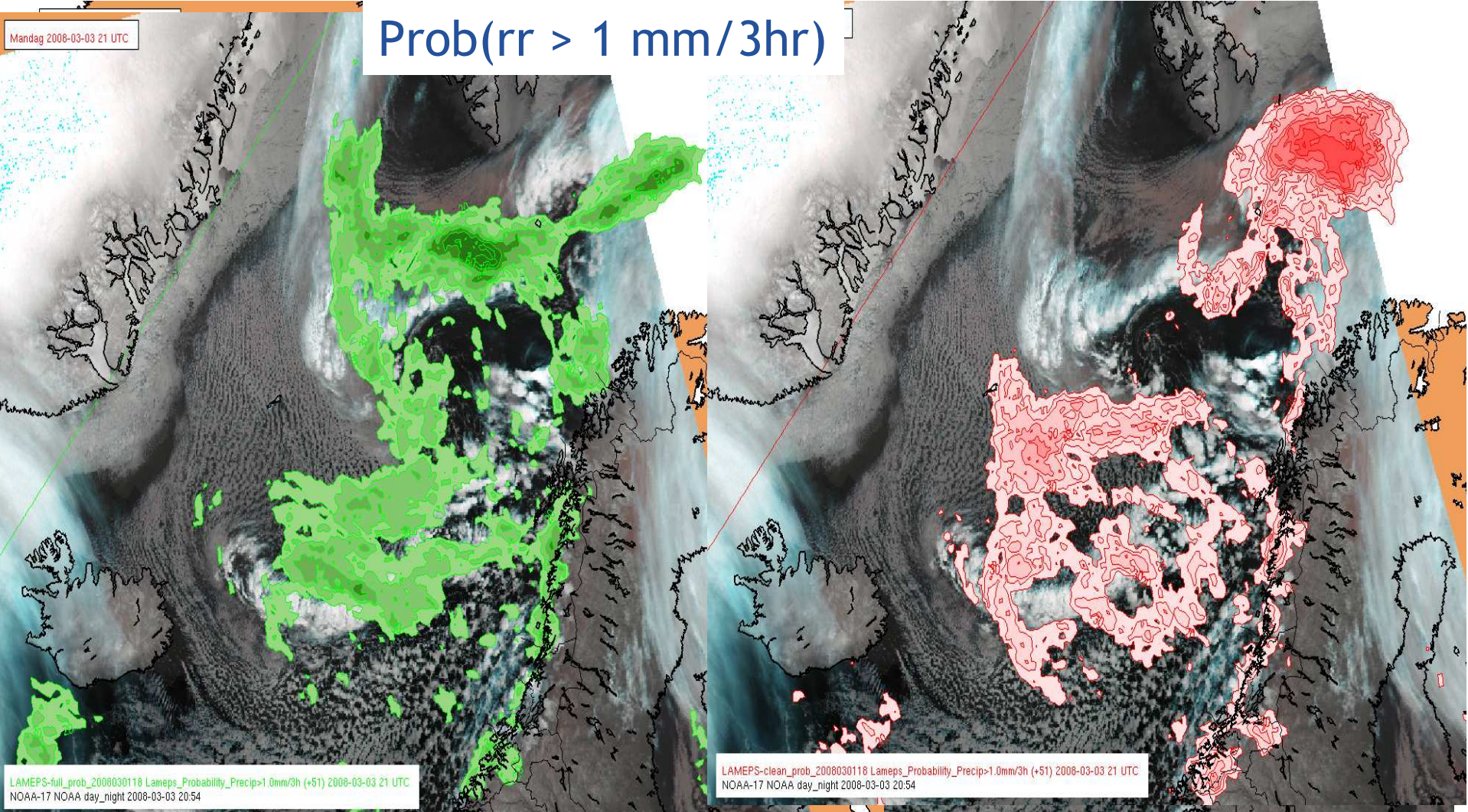
ROC area : Wind speed
20080214-20080910





IPY Thorpex:

Impacts of campaign observations on forecasting Polar Lows



No campaign obs. Incl campaign obs.