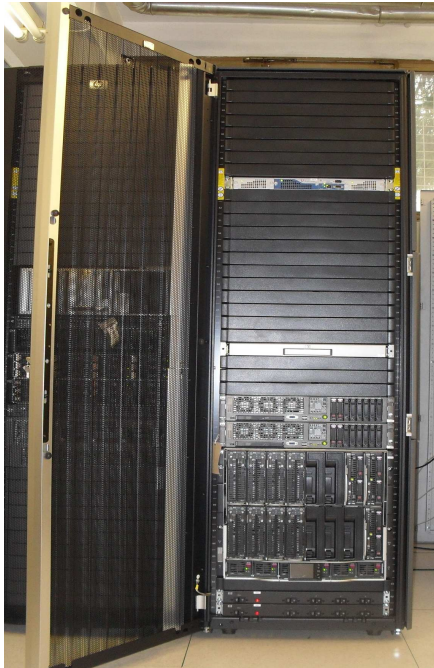




Computer facilities in operational NWP



HP XC

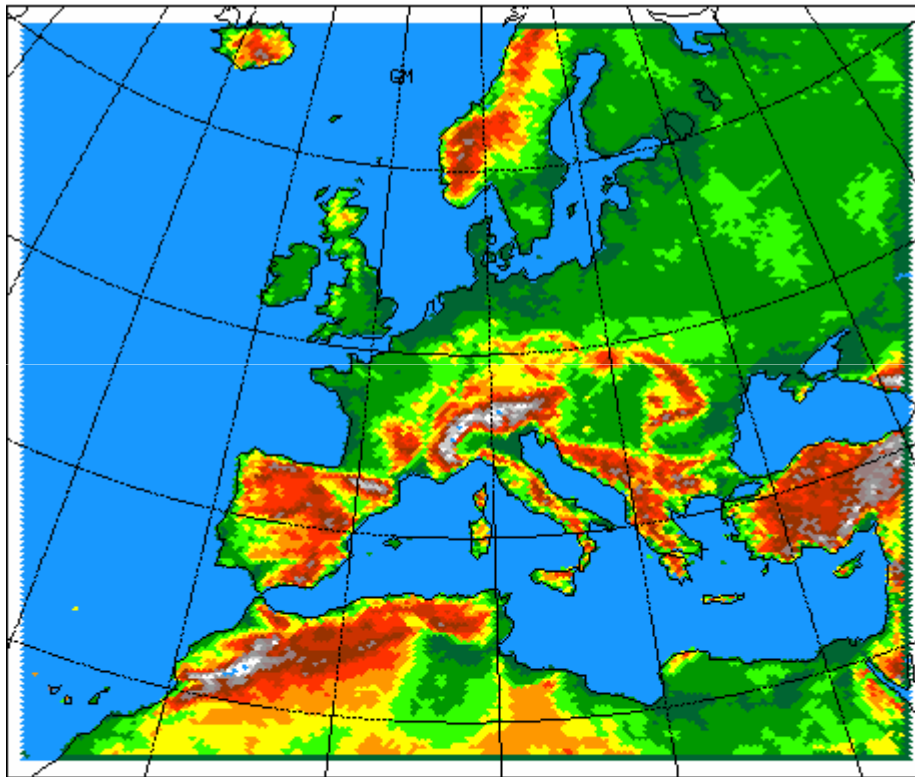
16 nodes (8 BL2x220c servers)
2 DL380 G5 head nodes
Intel Quad-core Xeon E5450
processors
3.0 GHz (total of 128 compute cores)
6 GB of DDR2 memory
Linux based OS RHEL 4
LSF is integrated with SLURM
Intel Compiler Suite 11.0.081
HP MPI 2.02.05.

HP x3600

Single stand-alone HP rx3600
DDR Infiniband based HP
XC3000bl cluster
Two Intel dual-core
Itanium2 processors
1.6 GHz and 8 GB of DDR
memory
SLES 10 Linux OS
Intel 9.1 compilers suite
HP MPI version 2.02.05.



Eta model - DWD Boundary Conditions



From 2001

Twice a day 00UTC/12UTC
120hours forecast
26km horizontal resolution
32 vertical levels
145x241 numerical points

Running on HP Workstation



WRF-NMM - ECMWF Boundary Conditions



Operational since **August 2007**

Several versions, from 2.2+ to 3.0.1

72 hours forecast

Start 00UTC/12UTC

10 km horizontal resolution

38 vertical levels

92x118 numerical points

February 2009

Version 3.1 installed

72 hours forecast

Start 00UTC/12UTC

4km horizontal resolution

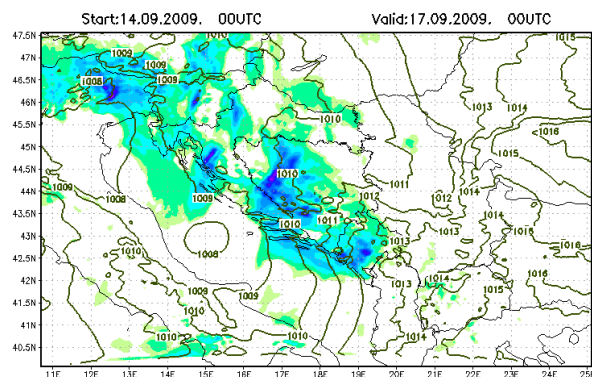
45 vertical levels

220x290 numerical points

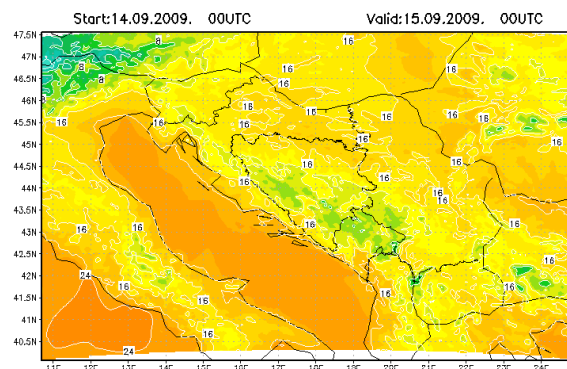


Some operational products

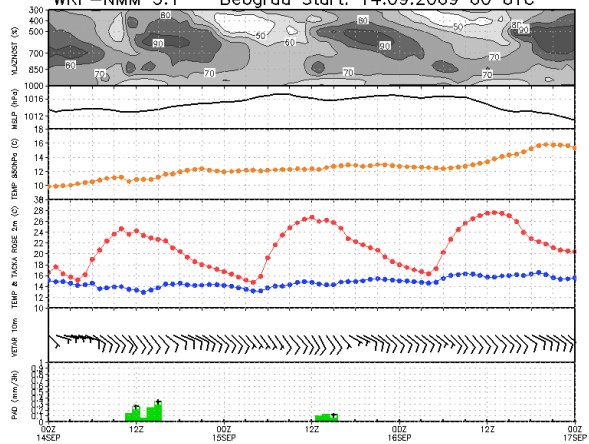
WRF-NMM 3.1.1 Ukupne 3h padavine (mm) & prizemni pritisak (hPa)



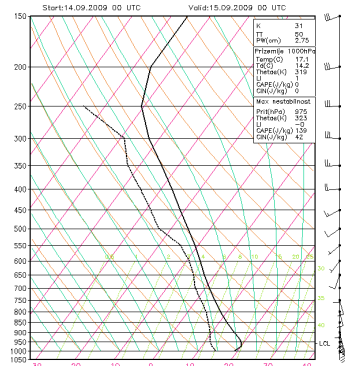
WRF-NMM 3.1 Temperatura na 2m (C)



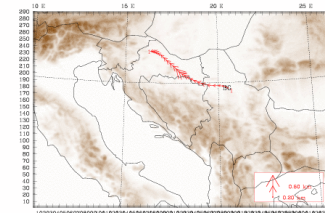
WRF-NMM 3.1 Beograd Start: 14.09.2009 00 UTC



WRF-NMM 4km Beograd (44.77N 20.42E h=127m)



Dataset: WRF/NM-RIP Forward Trajectories Terrain height AMSL Trajectories from hour: 0.000 to 24.000



Model Info: V3.1.1 2M, W2, P2L, Perrier, Nash LHM 2.8 km, 44 levels, 10 sec