



Met Office

EWGLAM/SRNWP - Helsinki, 8-11 Oct 2012

The UK Met Office Nowcasting Demonstration Project

Zhihong Li, Sue Ballard, David Simonin, Jean-Francois Caron

© Crown copyright Met Office



Contents

The Nowcasting Demonstration Project (NDP)

- Introduction
- Model and DA configurations
- Background error covariances
- Flooding cases in summer 2012
- Fractions Skill Score (FSS) of NDP, UKV and UKVPP
- Summary



Introduction - NDP

- Aim: Develop a NWP nowcasting system to produce more accurate and timely forecasts of severe and high impact weather, focusing especially on flood risk

Data Assimilation/analysis vital for these short period forecasts of 0-6 hours

- Rapid update cycling is needed: Hourly cycling
– Hourly analysis and forecasts every hour to T+6/12 hours
- 4D-Var to assimilate latest high resolution sub-hourly obs (e.g. Radar Doppler winds)
- Prompt delivery time (obs timeliness and P6/7)



Met Office

Introduction - NDP

- The NDP system started running in real-time with forecasts to T+6 hours from March 2012 on IBM P6 (until Sept 2012)
- The real-time running on IBM P7 (operational support) began in July 2012 with extended forecasts to T+12 hours
- Use London 2012 Olympics to perform a real-time demonstration
- Evaluate extreme flood events over period of May, June and July 2012

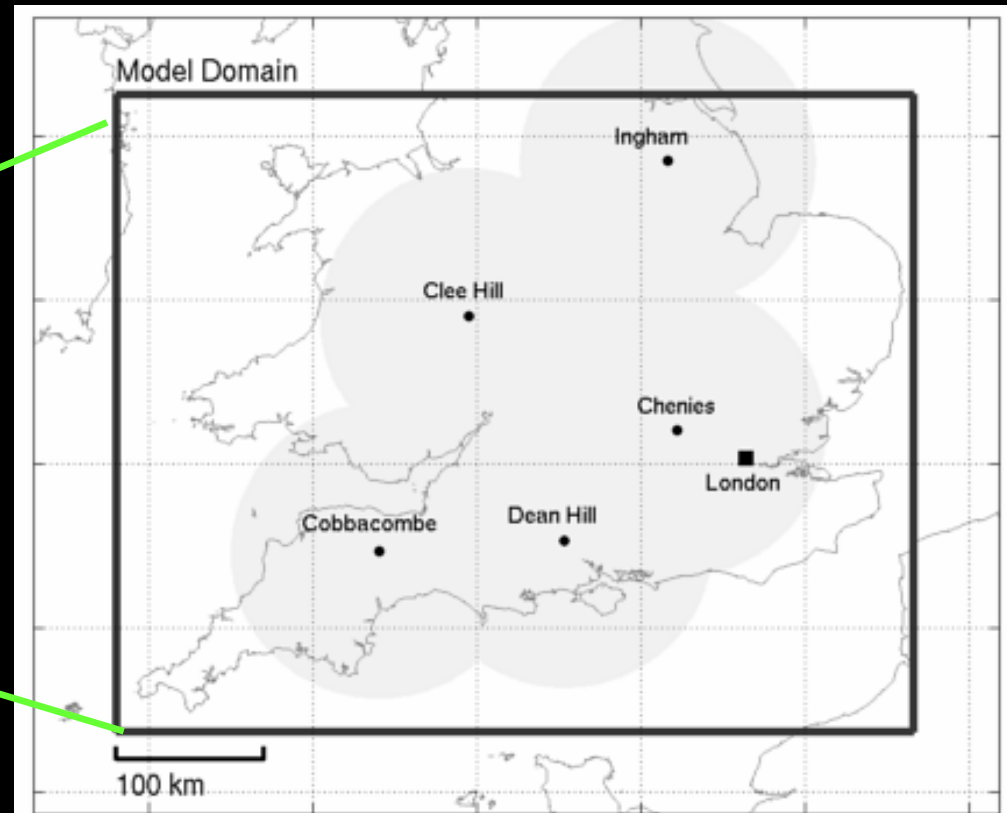
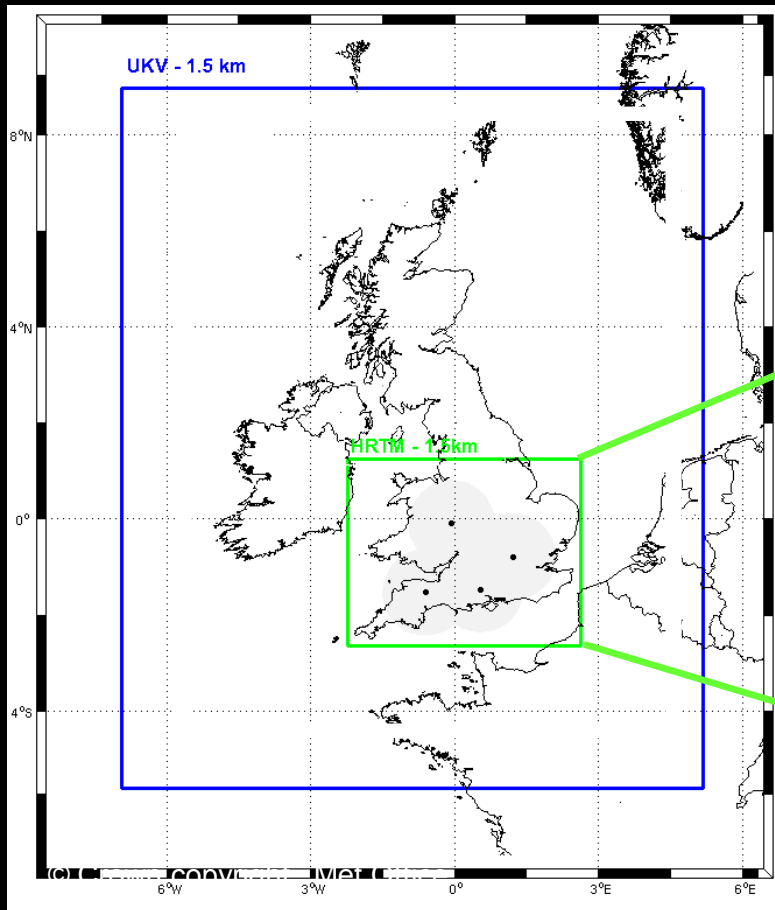
Configuration of the NDP (Sept 12, IBM P7)



Model Met Office	UM Resolution	DA method	DA time window	Cycling	Forecast Length/Freq
NDP (Southern UK)	1.5 km (360x288x70)	4D-Var (3km)	1 hr	1 hr	T+12 (every hr)
UKV (UK)	1.5 km (744x928x70)	3D-Var (3km)	3 hr	3 hr	T+36 (every 3h)

Nested in UKV. LBCs refreshed every 3 hours with 30 mins update interval

NDP





NDP HOURLY CYCLE

Observations

Observation Processing ~1min

4D-Var

4D-Var ~ 4mins

UM 12h f/c ~ 10mins

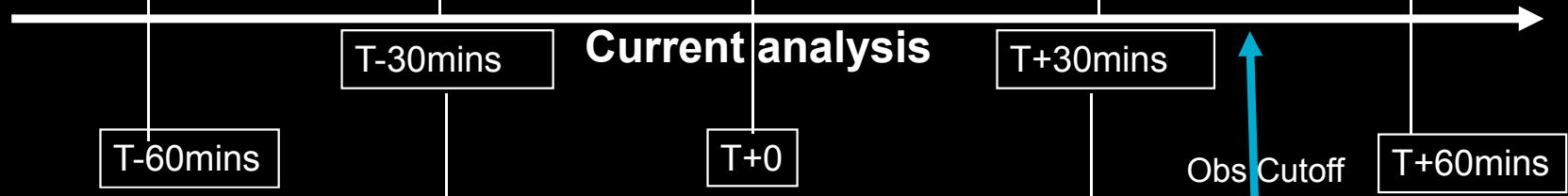
1 hour f/c from T-90mins for background (first guess) in 4D-Var

1 hour to 2hour f/c from T-90mins with output every 10mins from T-30mins to T+30mins for ModelObs in 4D-Var

1 hr Observation/Assimilation window

DATA

4D-Var Inc



Previous analysis time

Latent Heat Nudging

Radar-derived rain rates (every 15 mins)

Nudging

Start T+45 mins
OPS ~ 1 min
4D-Var ~ 4 mins
UM 12h f/c ~10 mins
(Total run time 15 mins)
Forecast ready T+60 mins

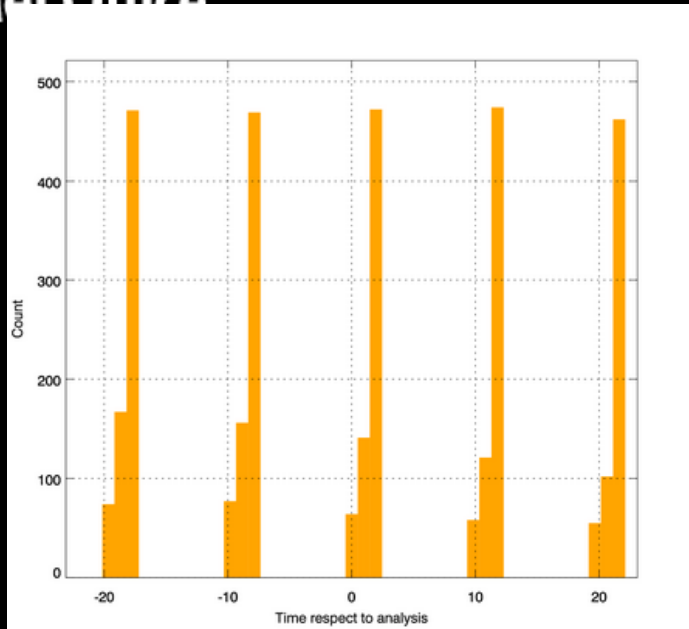


Use of Observations in NDP

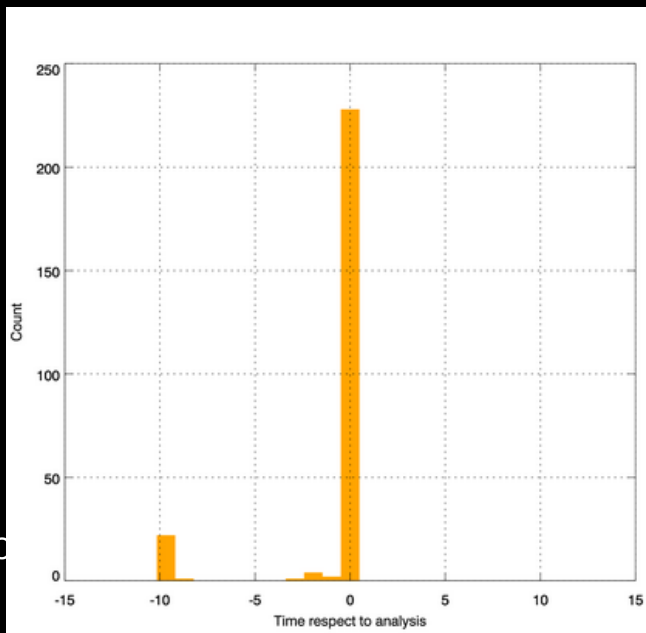
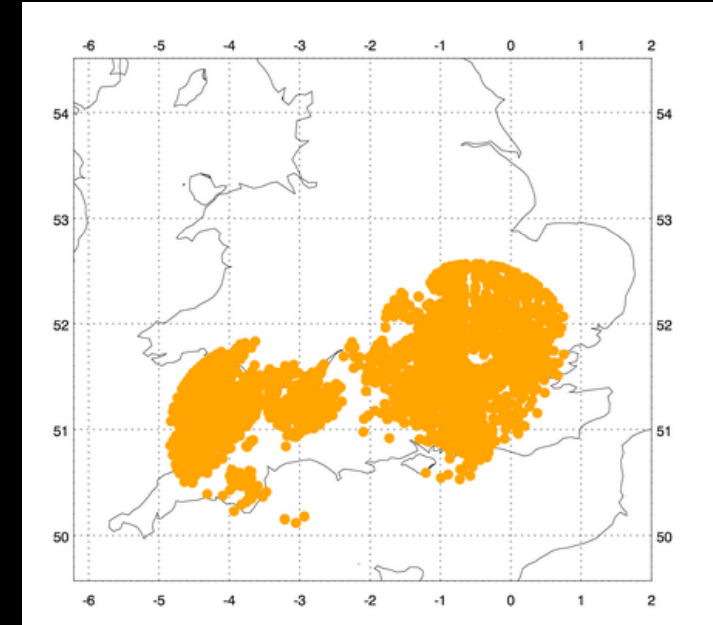
- 4D-Var assimilation of sub-hourly and hourly observations at each cycle [T-30mins to T+30mins], using
 - Doppler radial winds from 5 radars, every 10 mins
 - winds from 4 wind profilers every 15 mins
 - MSG SEVIRI satellite radiances: channel 5, channel 6 & window channels (sea only) every 15 mins
 - hourly cloud obs (satellite and surface reports)
 - hourly MSG AMVs
 - hourly aircraft temperature & wind
 - hourly surface temperature, relative humidity, wind & pressure from SYNOP and Open Road
- Latent Heat Nudging using radar-derived surface rain rates every 15 minutes



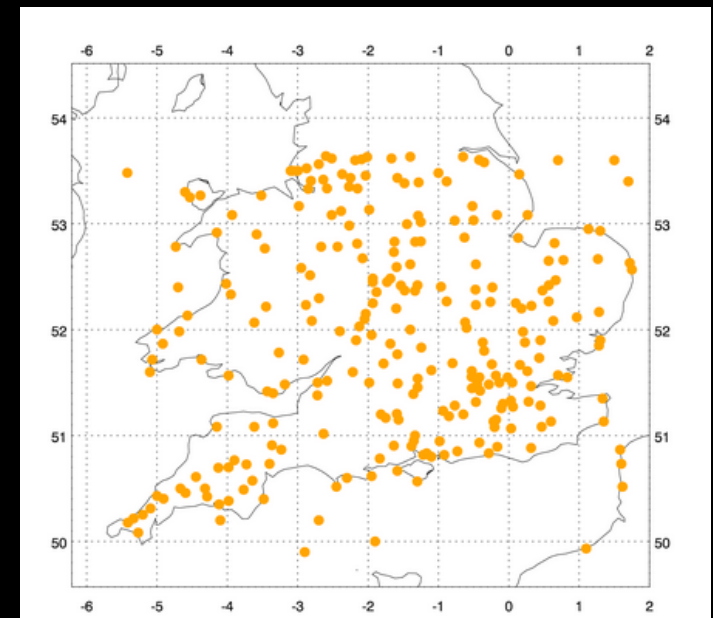
Doppler Radial winds and Surface Obs - 12UTC run 07 May 2012



Doppler winds every 10 mins



Hourly surface obs (SYNOP+Open Road)



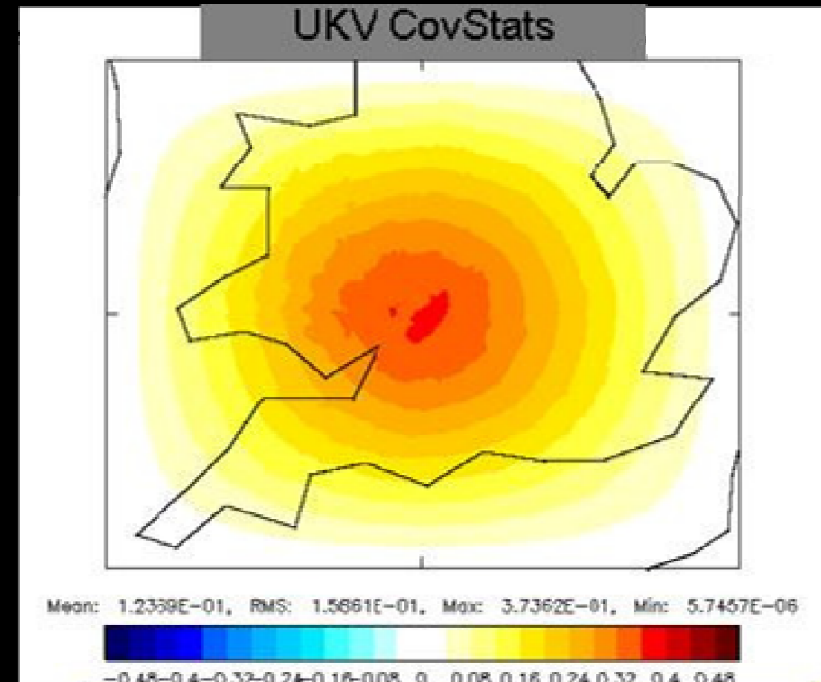
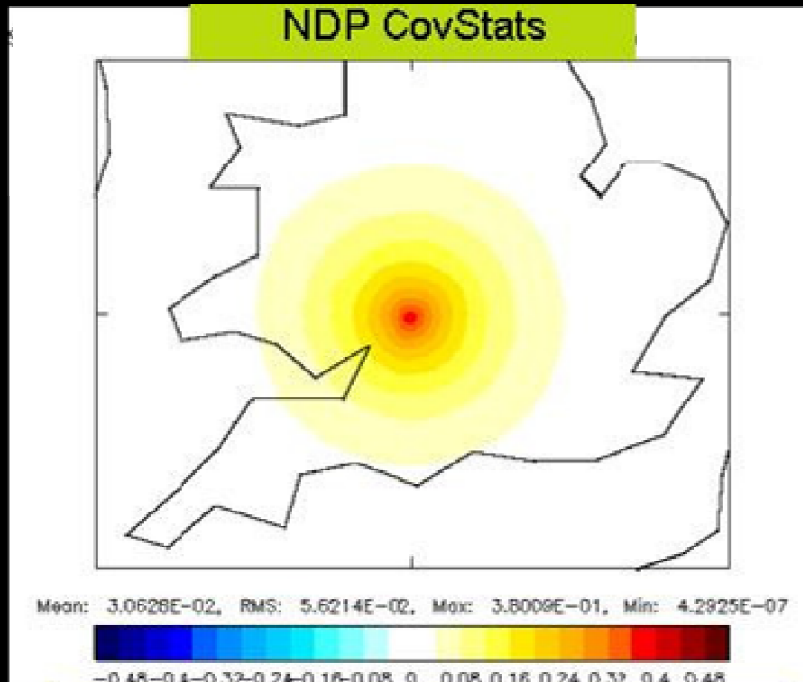


Background error covariances: Met Office covariance model for LAMs uses a SOAR function to model horizontal correlations

NDP length scales derived directly from 6 & 3 hour forecast differences and vary with vertical mode: 60 - 10 km for stream function / velocity potential & between 30 km - 2 km for unbalanced pressure / humidity

UKV length scales derived from 24 & 12 hour forecast differences at radiosonde locations: 180 km for streamfunction, 130 km for velocity potential / unbalanced pressure & 90 km for humidity

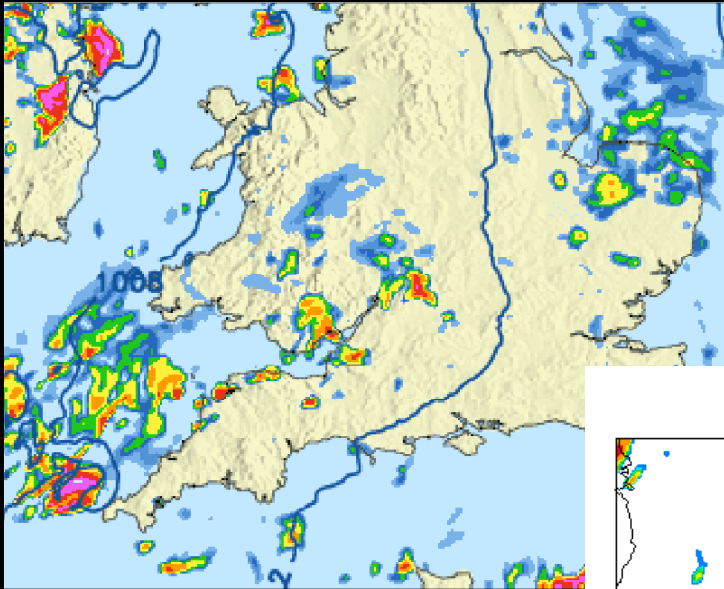
Spreading observations in space: assimilating a pseudo 2K temperature innovation with 1K error at 850hPa



Oxfordshire tornado, 7th May 2012: comparison of analyses for 15UTC



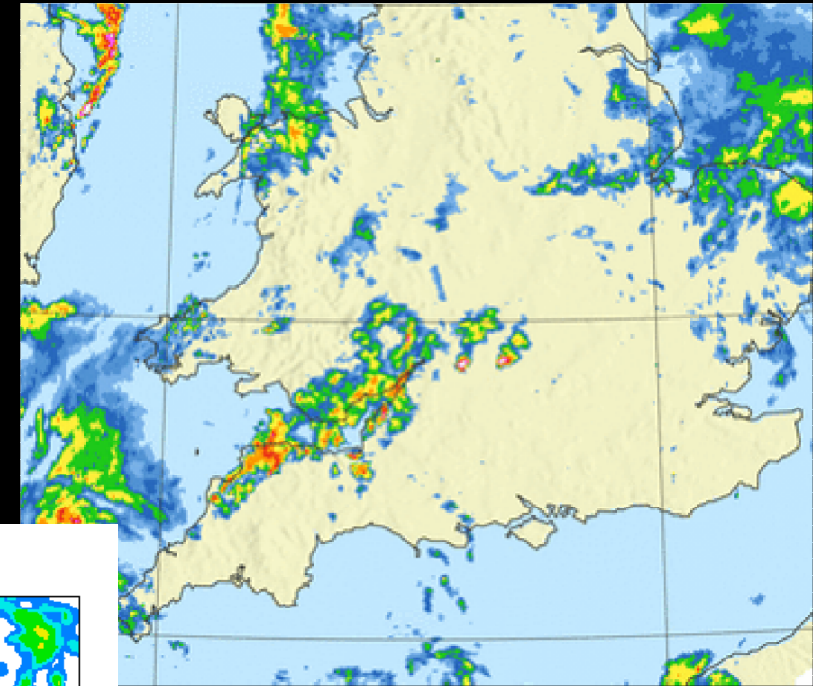
Met Office



15UTC UKV
T+0

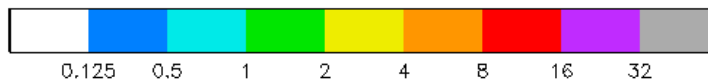
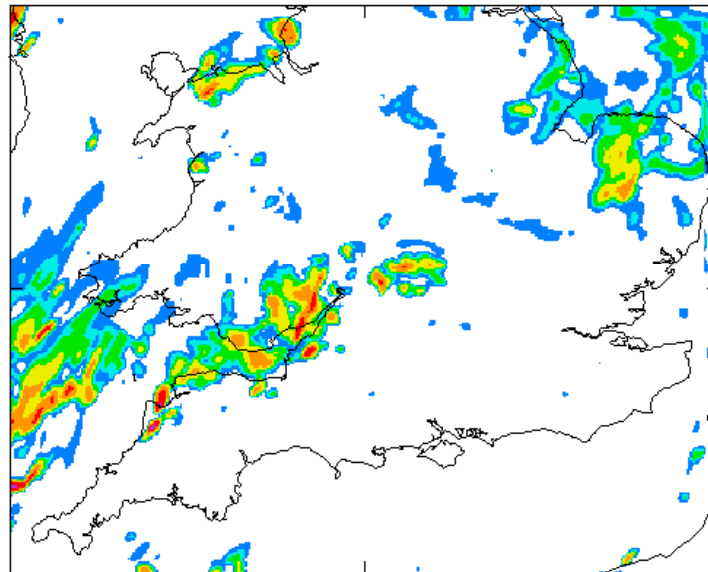
UKV T+6/T+0
Indication of location

15UTC NDP
T+0



15UTC radar
composite

Total precipitation rate, mm/hr
1500 07/05/2012



Oxfordshire tornado, 7th May 2012



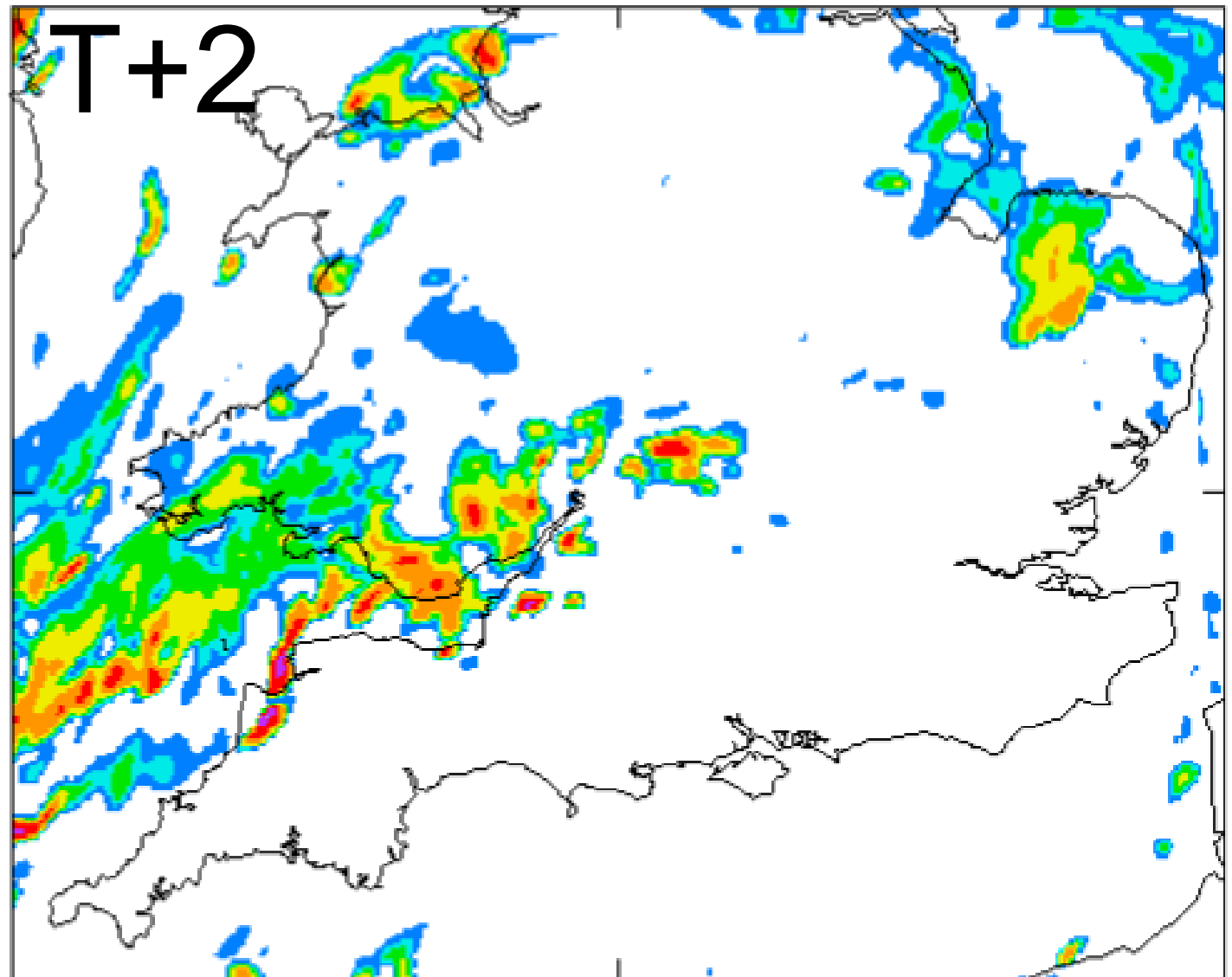
Met Office

NDP

All NDP forecasts from 12UTC onwards had a good forecast of the location of the storms at 15UTC - skill improves with time

Valid at 15UTC

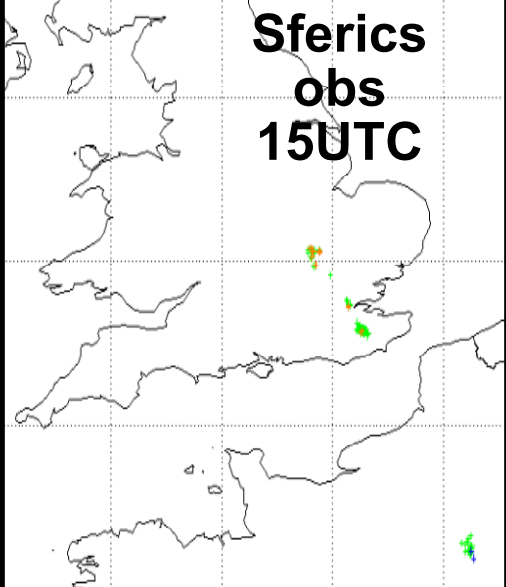
© Crown copyright Met Office



0.125 0.5 1 2 4 8 16 32

(London-Leicester) Line Convection: 28th May 2012

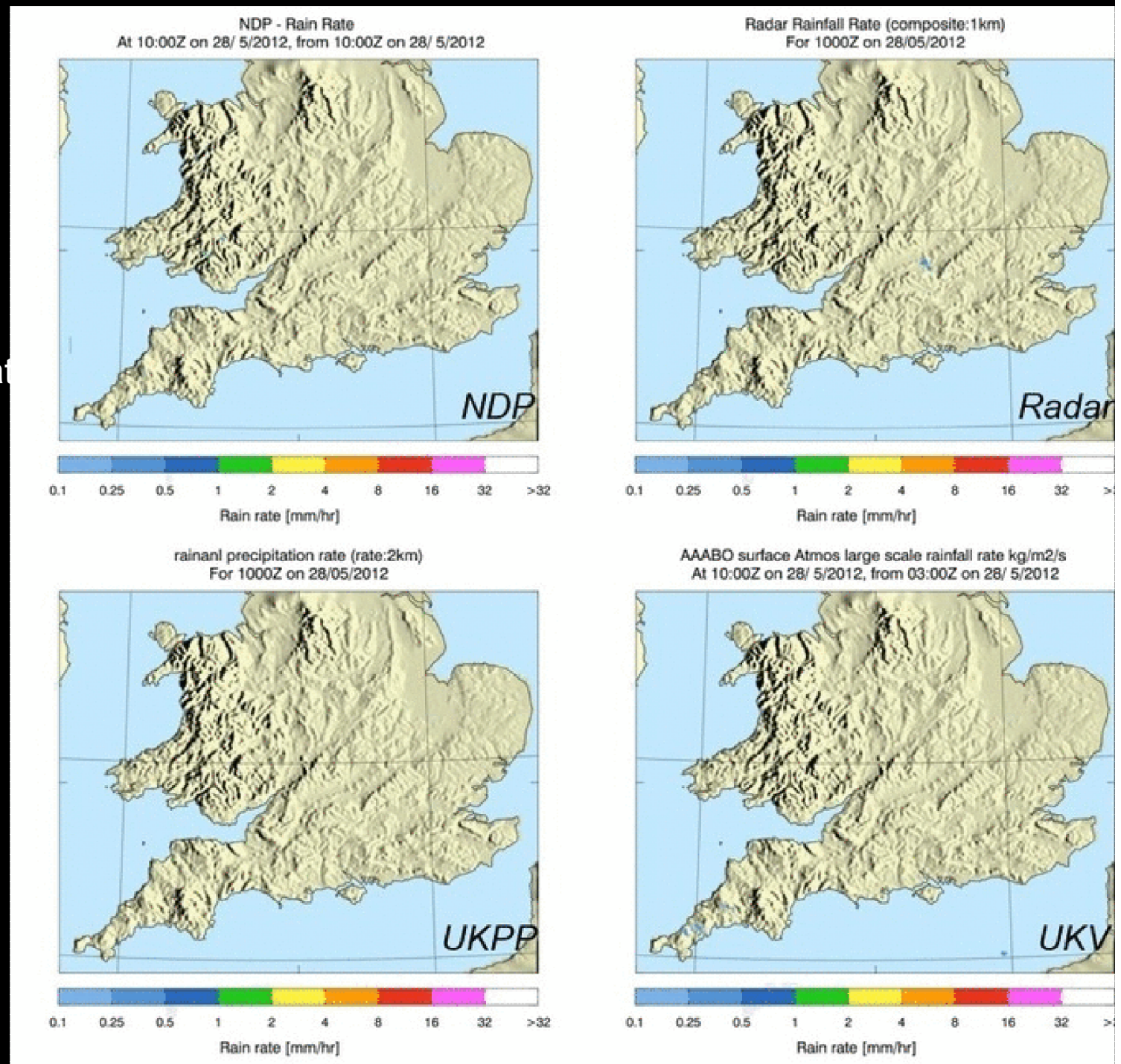
Animation: NDP 10UTC run (using UKV 03Z LBC)



Thunderstorms not present at analysis times

- (1) UKPP failed to predict storms: neither extrapolation nor UK4 had them
- (2) UKV developed isolated storms too far east
- (3) NDP had a good forecast of the thunderstorms

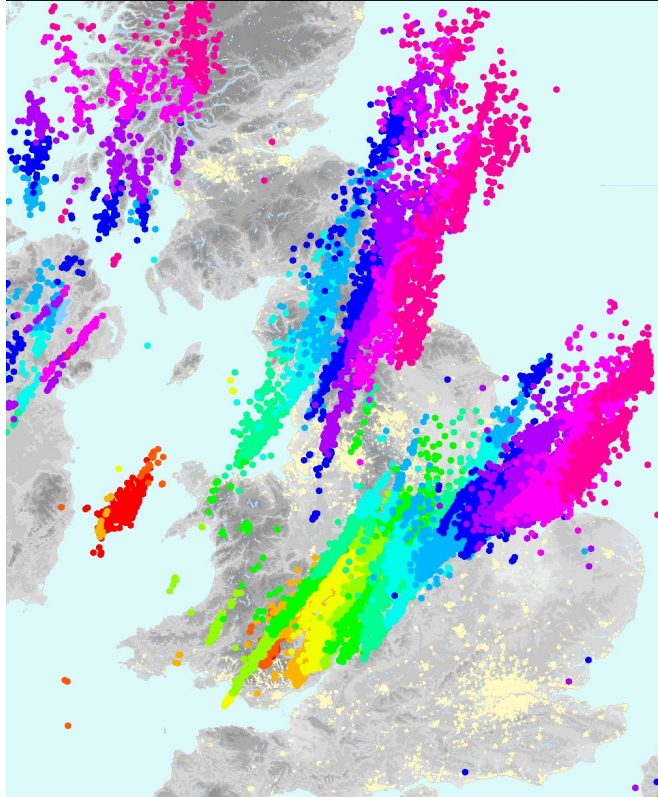
UKPP(STEPS) - current nowcasting system:
Merged advection of actual radar rainrate and UK4 forecasts





Met Office

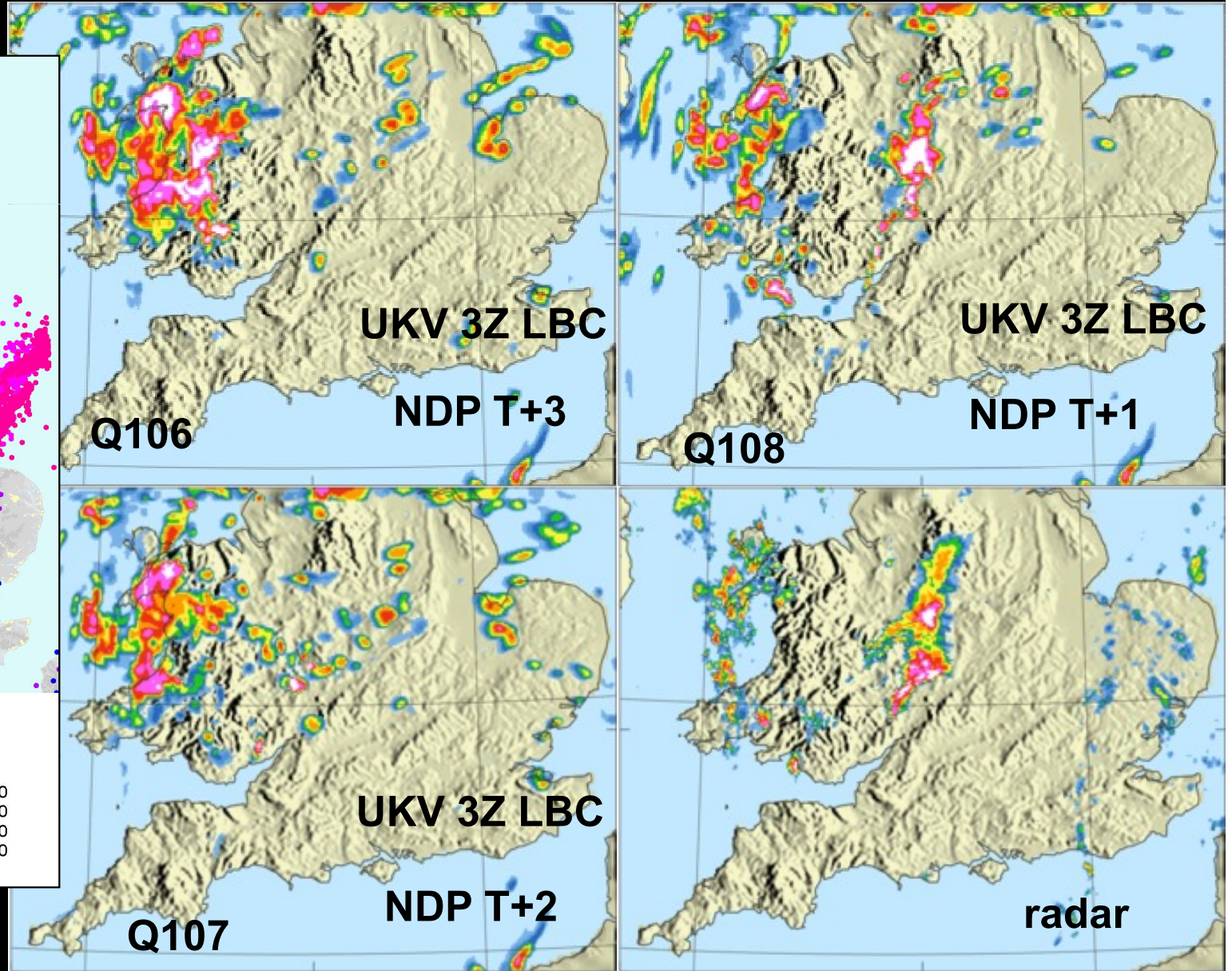
Thunderstorms & flooding June 28th 2012: NDP forecasts for 09UTC (UKV 3Z LBC)



Lightning strikes 28th June 2012

Lightning strike times

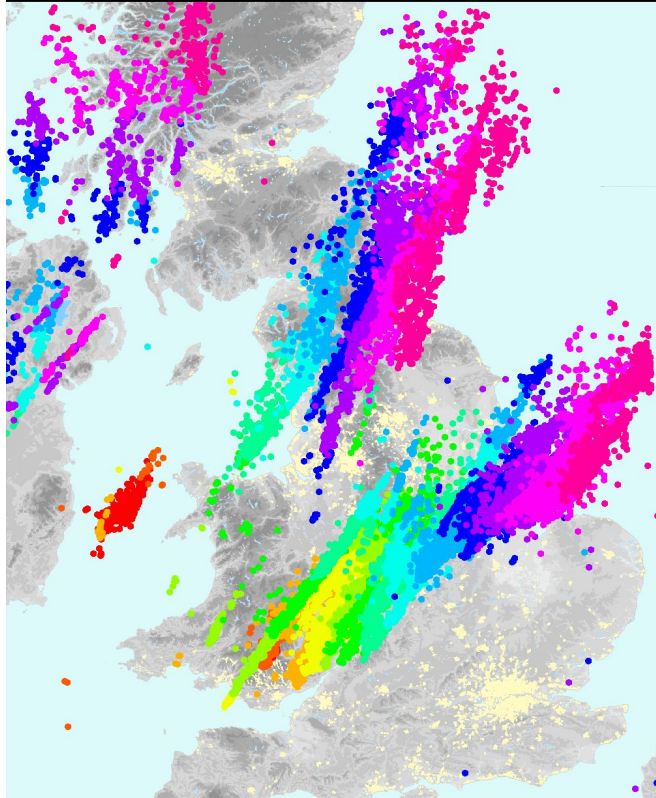
- | | | |
|------------------|------------------|------------------|
| • 05:00 to 06:00 | • 10:00 to 11:00 | • 14:00 to 15:00 |
| • 06:00 to 07:00 | • 11:00 to 12:00 | • 15:00 to 16:00 |
| • 07:00 to 08:00 | • 12:00 to 13:00 | • 16:00 to 17:00 |
| • 08:00 to 09:00 | • 13:00 to 14:00 | • 17:00 to 18:00 |
| • 09:00 to 10:00 | | |





Met Office

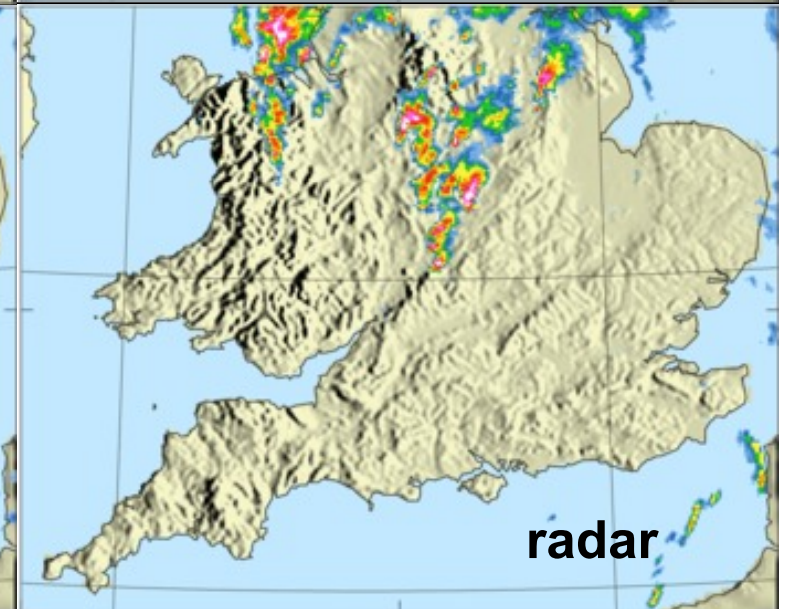
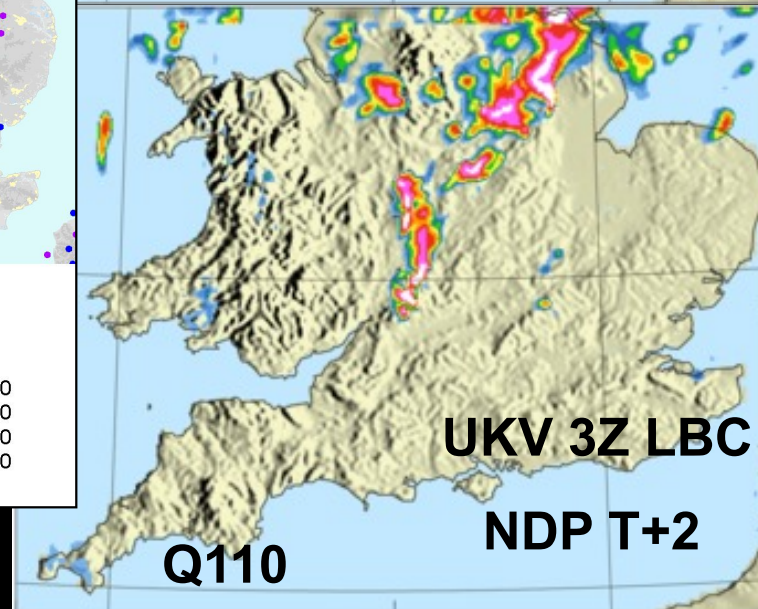
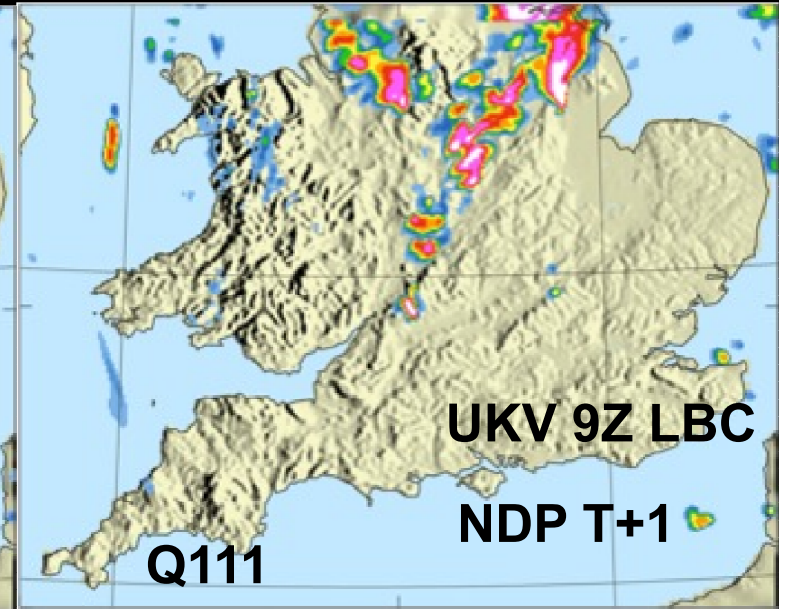
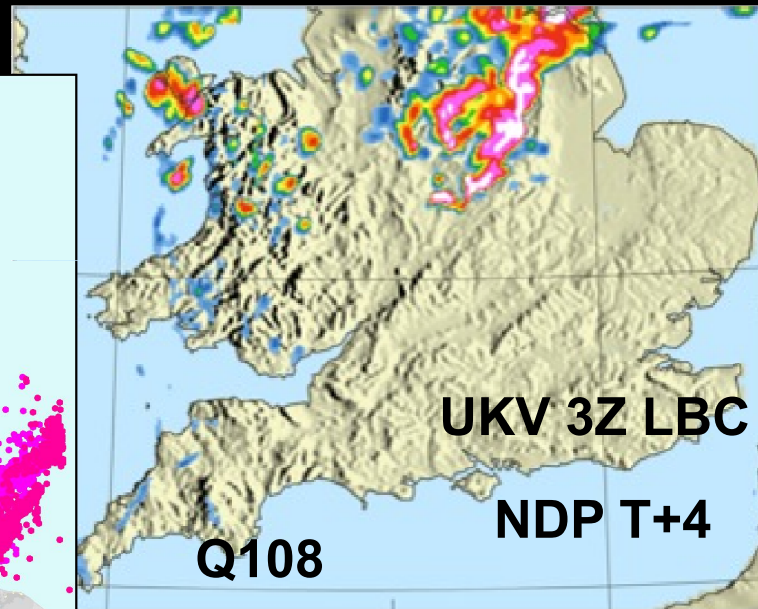
Thunderstorms & flooding June 28th 2012: NDP forecasts for 12UTC



Lightning strikes 28th June 2012

Lightning strike times

- 05:00 to 06:00 • 10:00 to 11:00 • 14:00 to 15:00
- 06:00 to 07:00 • 11:00 to 12:00 • 15:00 to 16:00
- 07:00 to 08:00 • 12:00 to 13:00 • 16:00 to 17:00
- 08:00 to 09:00 • 13:00 to 14:00 • 17:00 to 18:00
- 09:00 to 10:00



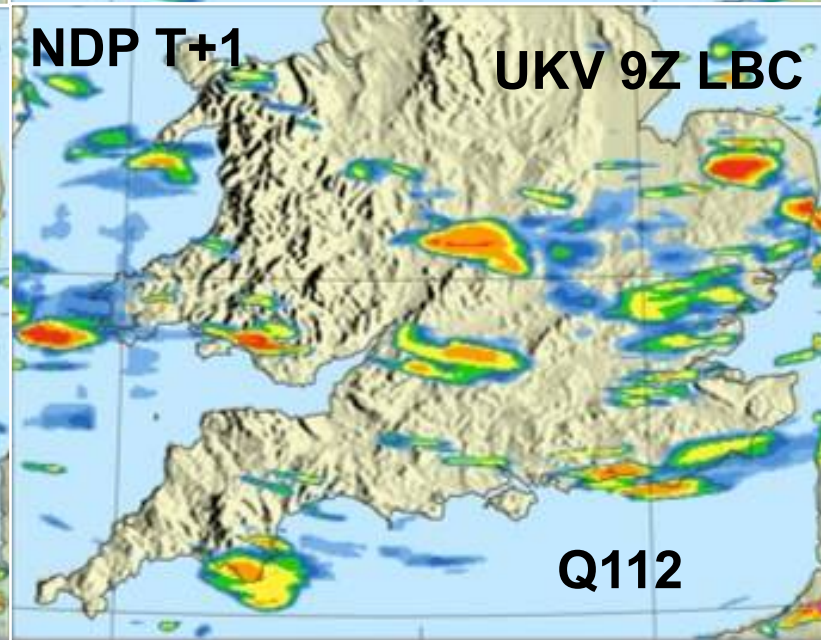
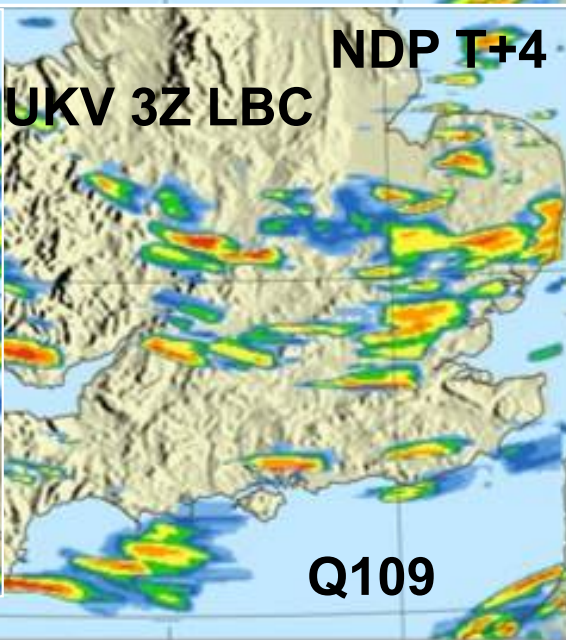
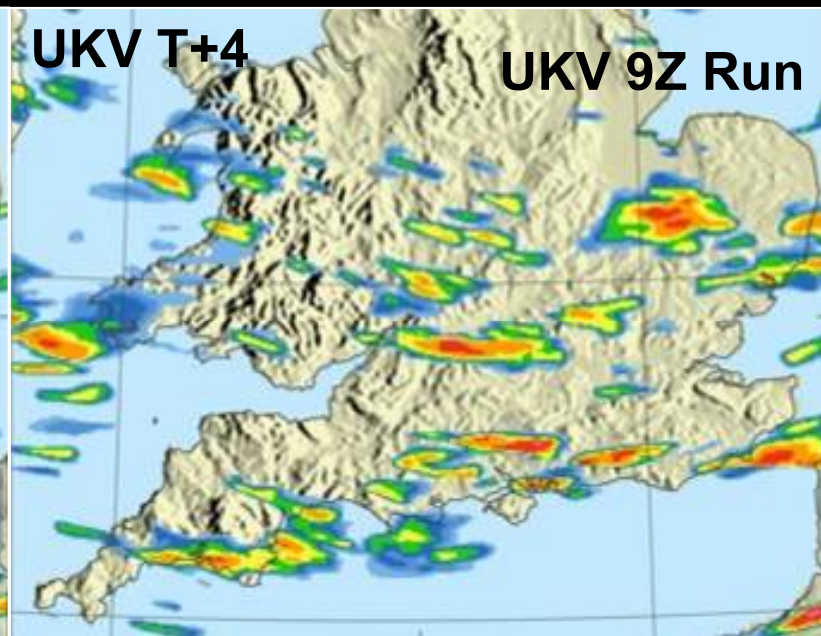
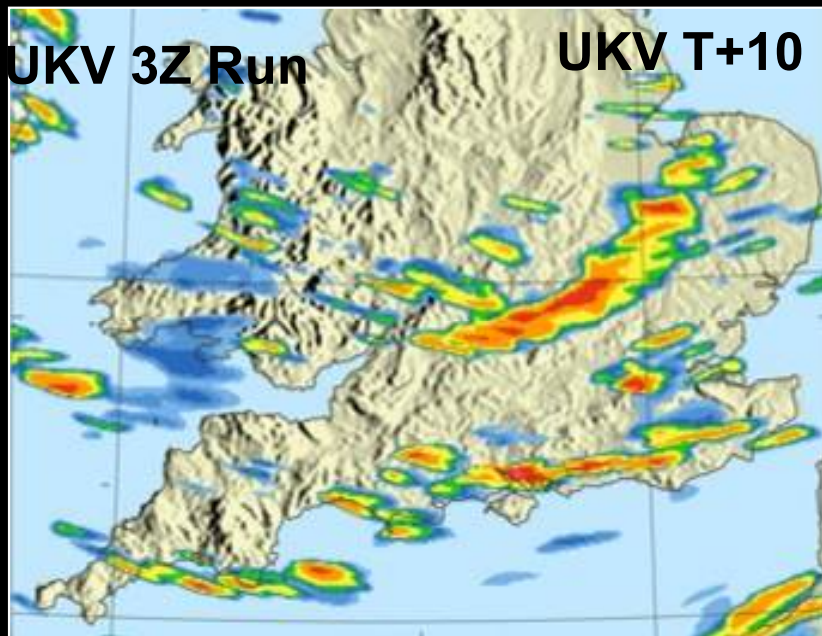
Flash Flooding along South Coast, July 11th 2012, Hourly Accumulations, 13UTC



Met Office

UKV T+10 is best match to radar

Later UKV & NDP appear to break up the rain band



© Crown copyright Met Office

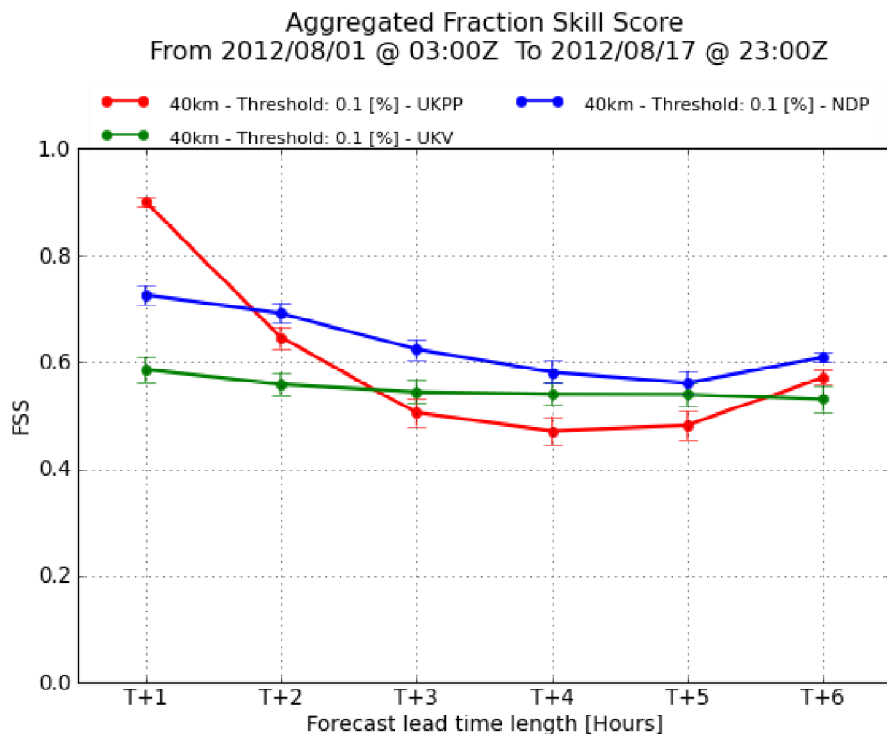
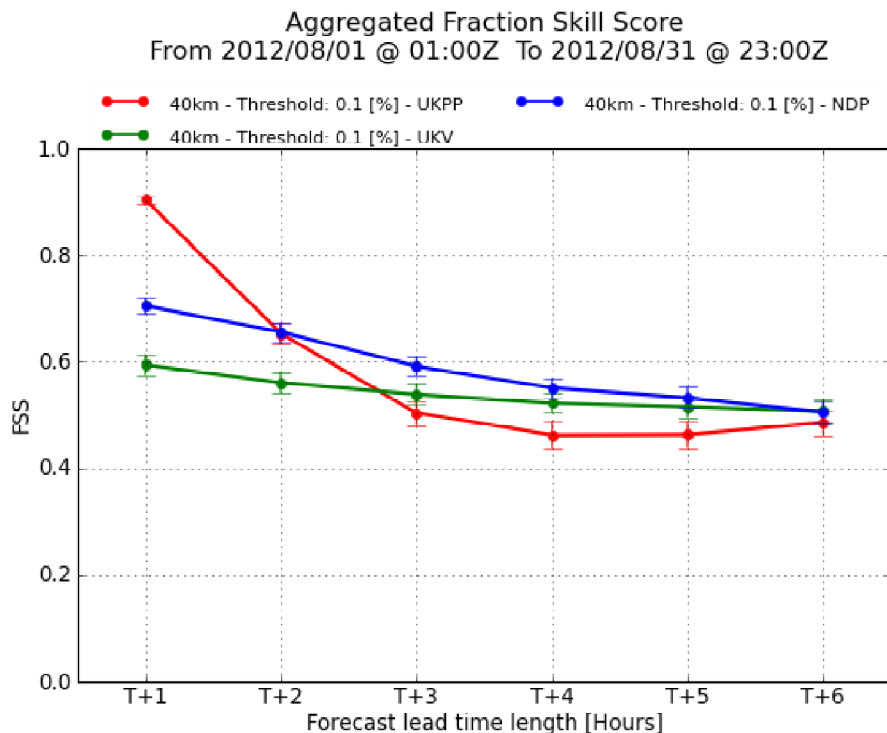


FSS – NDP/ UKV / UKVPP – Same validity time, based on NDP delivery time



NDP P6
 P6 UKV LBC - 6hrly
 10% - 40 km square
 UKVLBC 03 09 15 21

NDP P7
 P7 UKV LBC 3hrly
 10% - 40 km square
 UKVLBC 03 06 09 12
 15 18 21 00



Match NDP forecast run with the latest UKV forecast available (UKV has a longer f/c lead time)

UKVPP -
 Extrapolation of radar + UKV

UKVPP
 NDP
 UKV

NDP benefited from more upto date LBCs from UKV



Summary - NDP

- A high resolution (1.5km) NWP nowcasting system has been developed and run in real-time over the southern UK for demonstration during London 2012
- It assimilates sub-hourly Doppler radial winds, wind profiler, (GPS) & MSG SEVIRI data using hourly cycling 4D-Var
- The system currently produces a 12 hour forecast every hour by 30mins after the end of the observation window
- Forecasts were sometimes significantly better than the 6 hourly UKV, but substantial challenges remain
- FSS beats the STEPS (current Lagrangian extrapolation-based Nowcasting system)
- Form the basis for the Met Office next generation operational UK NWP nowcasting system



Met Office

Thank you for your listening!

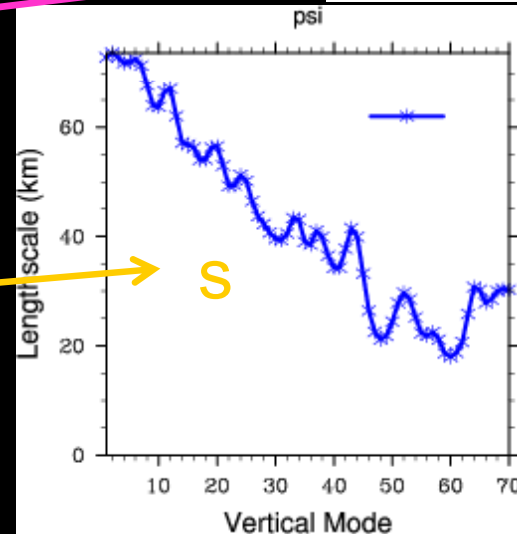
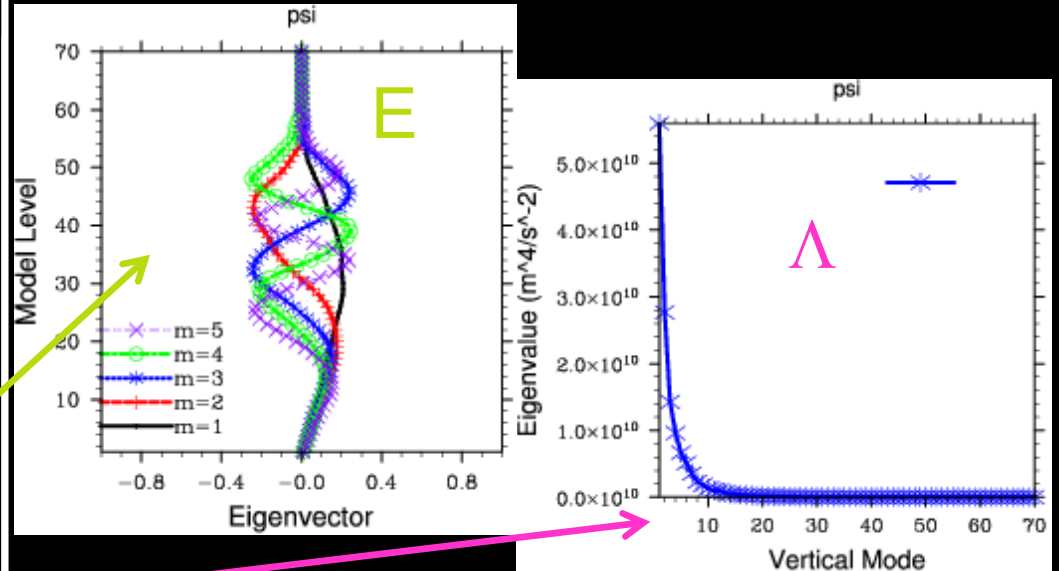
See <http://www.metoffice.gov.uk/research/news>

Questions?

Background error covariances

1
2
3
4

Covariance model for LAMs	
\mathbf{x}'	$u', v', \theta', \rho', p', q'$
Parameter transform $\mathbf{v}_p = \mathbf{T}_p \mathbf{x}'$	ψ', χ', p'_u, r' $p'_u = p'_h - \mathbf{F} f(\psi)$
Vertical transform \mathbf{T}_v	auto covariances only $\mathbf{B}_v(i, j) = \mathbf{E} \mathbf{\Lambda} \mathbf{E}^T$ $\mathbf{v}_p(i, j, k) \rightarrow \mathbf{v}_v(i, j, m)$
Horizontal transform \mathbf{T}_h	$\mathbf{B}_h(r) = \mathbf{B}_h(0) \left(1 + \frac{r}{s} \right) e^{r/s}$



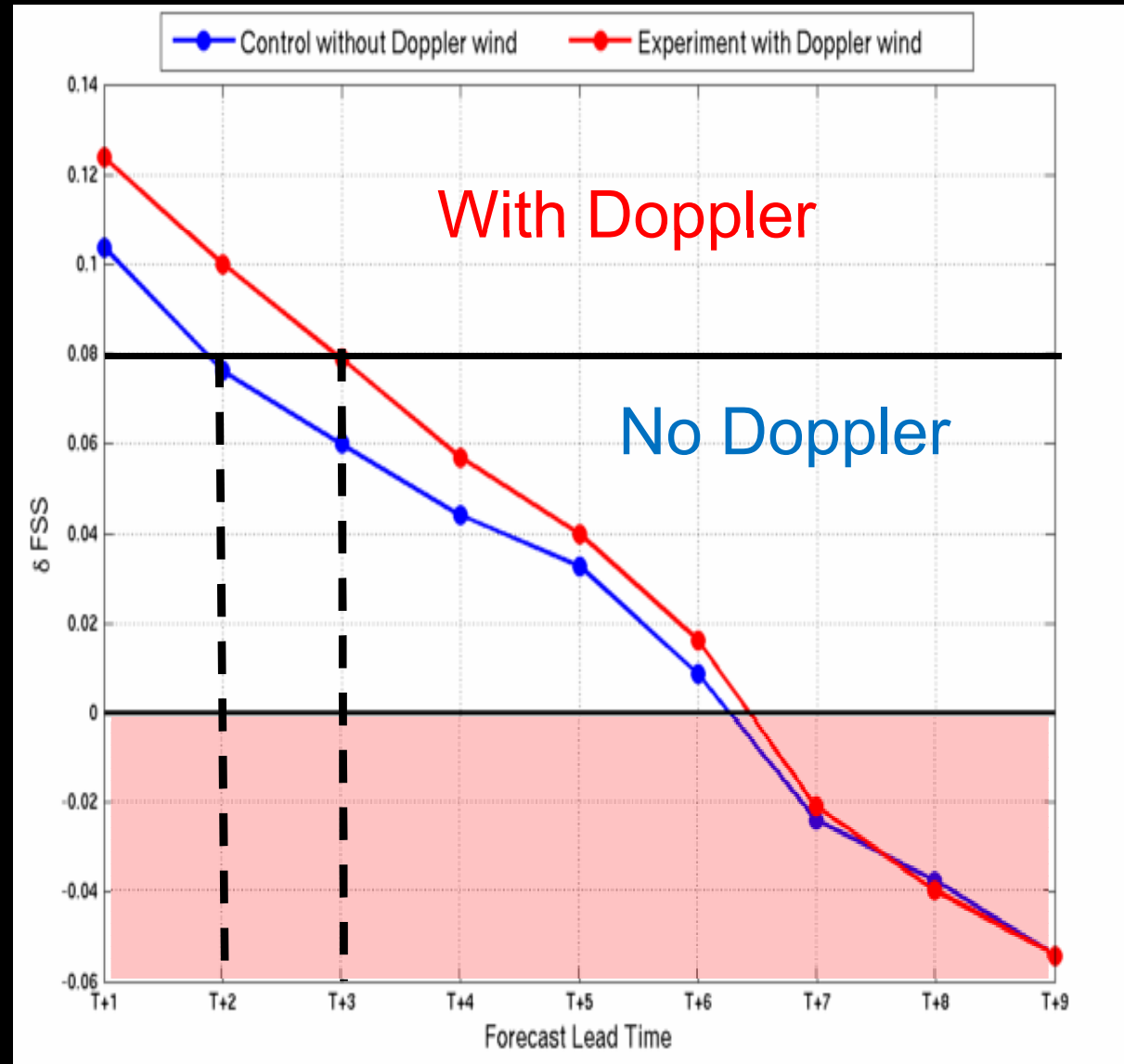
NDP



Impact of Doppler Radial Winds in 3D-Var

Fractions Skill Score (FSS) for $> 0.2\text{mm}$ hourly accumulations at a scale of 55km

Forecast skill is improved for rain accumulations (~1-hour gain)





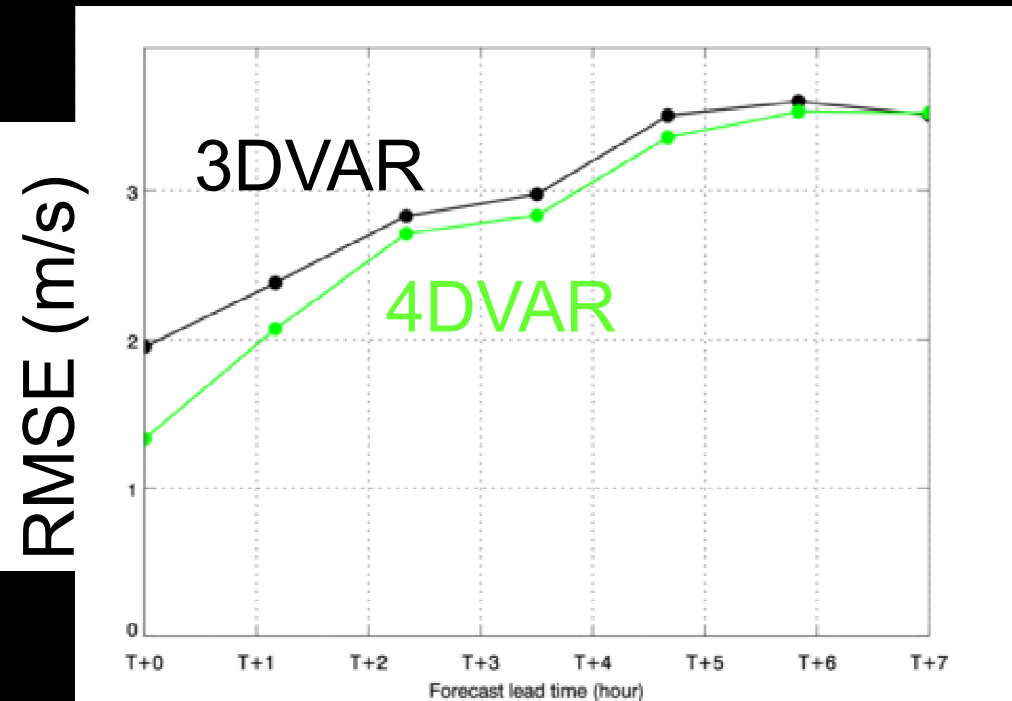
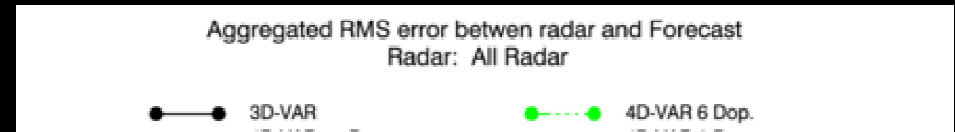
Impact of assimilating sub-hourly Doppler radial winds in 4D-Var on rms error

Verification against Doppler Radial Winds

4D-Var with 10 mins Doppler winds

3D-Var with hourly Doppler winds

rms error aggregated for 2 cases of 16 and 23 cycles respectively



T+0 Forecast range T+7