

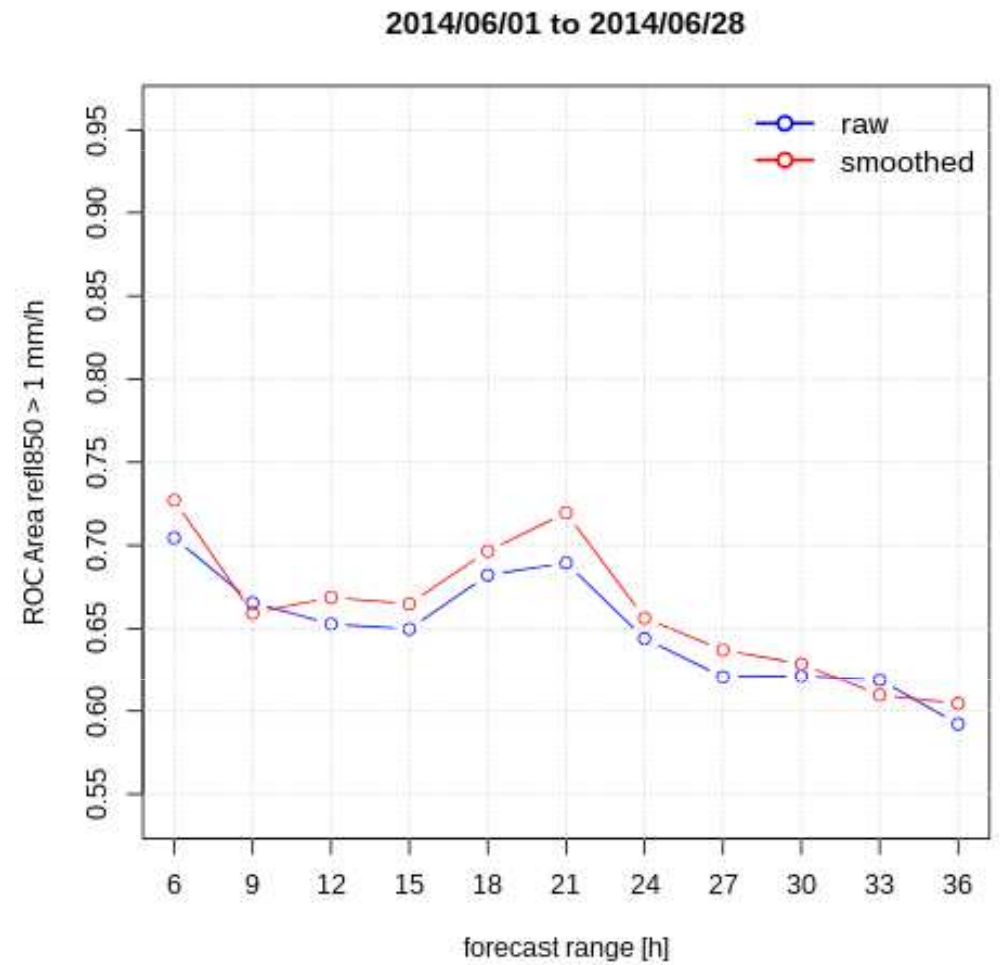
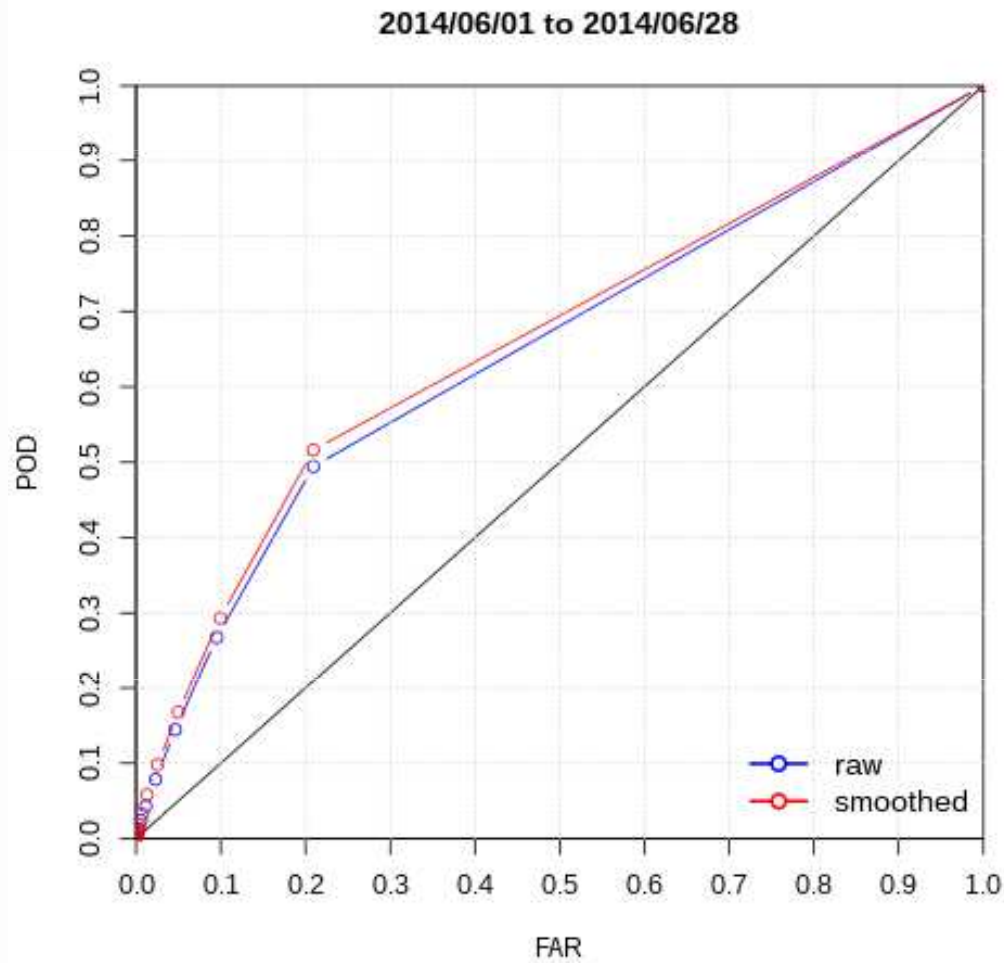


Verification of modelled radar reflectivities by the mesoscale ensemble forecast model PEAROME

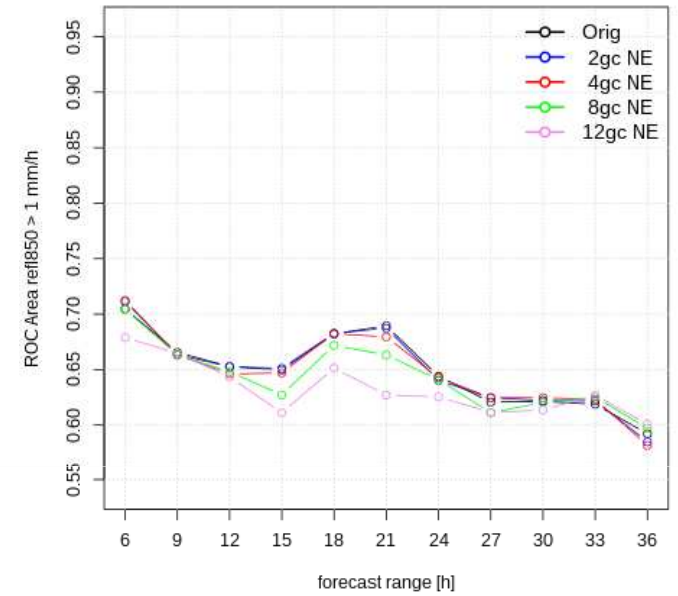
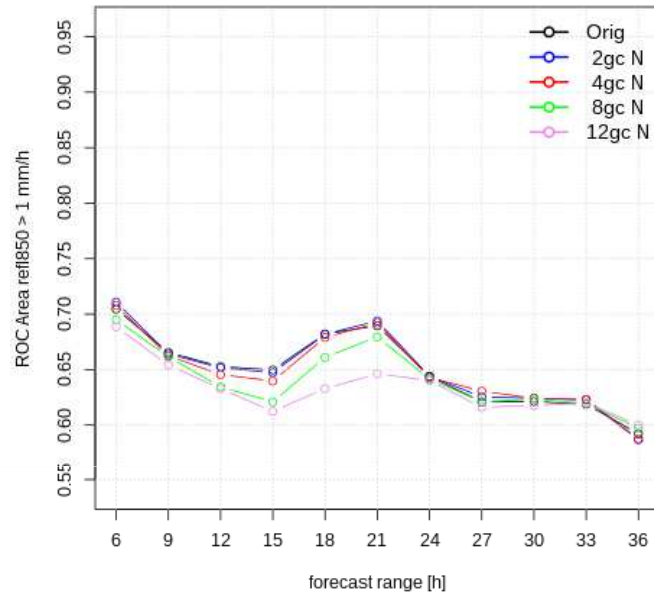
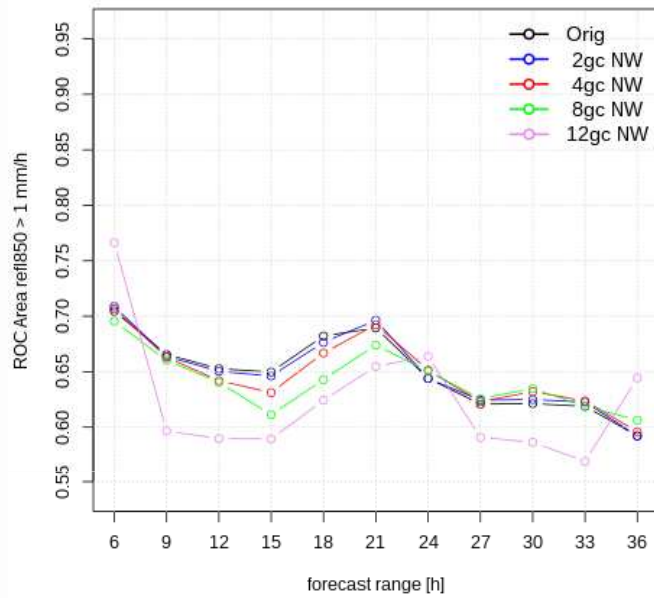
Study in framework of the Single European Sky ATM Research program
SESAR-IMET

Modelled radar reflectivities from the Arome-EPS

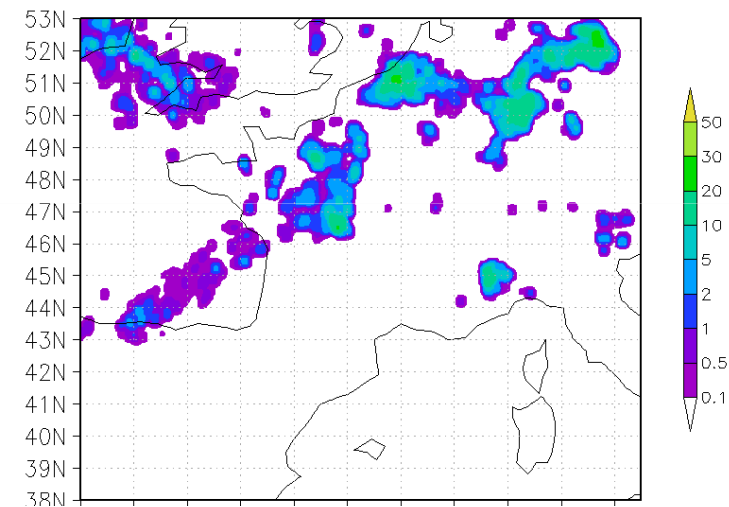
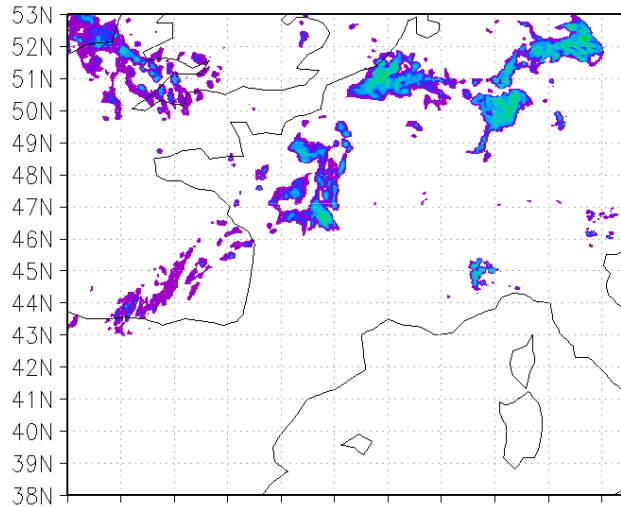
Verification against Meteo France radar mosaic



Study of spatial uncertainties by shifting of forecasts

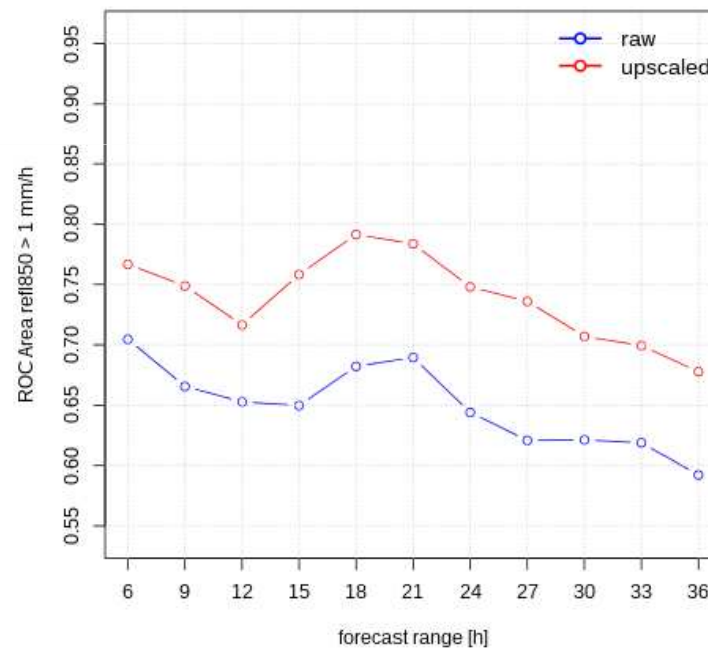
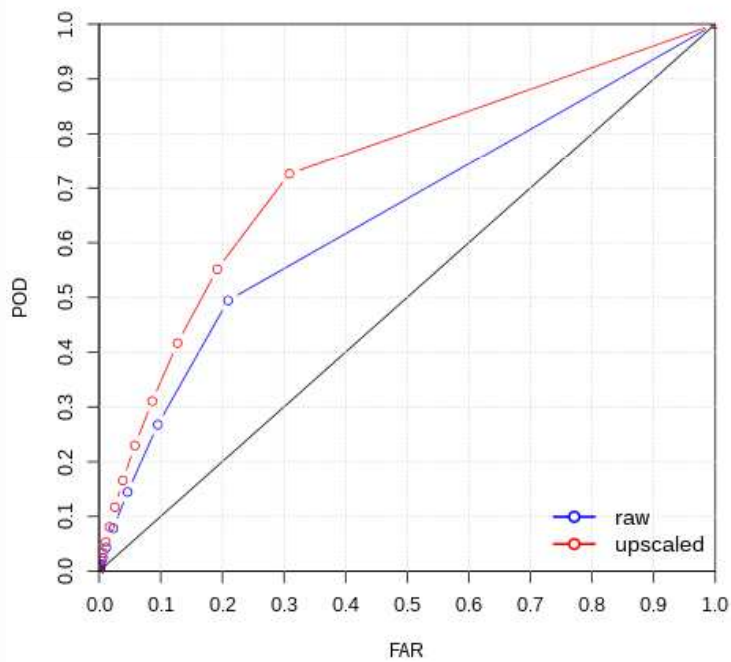


Upscaling lead to improvement in forecast scores

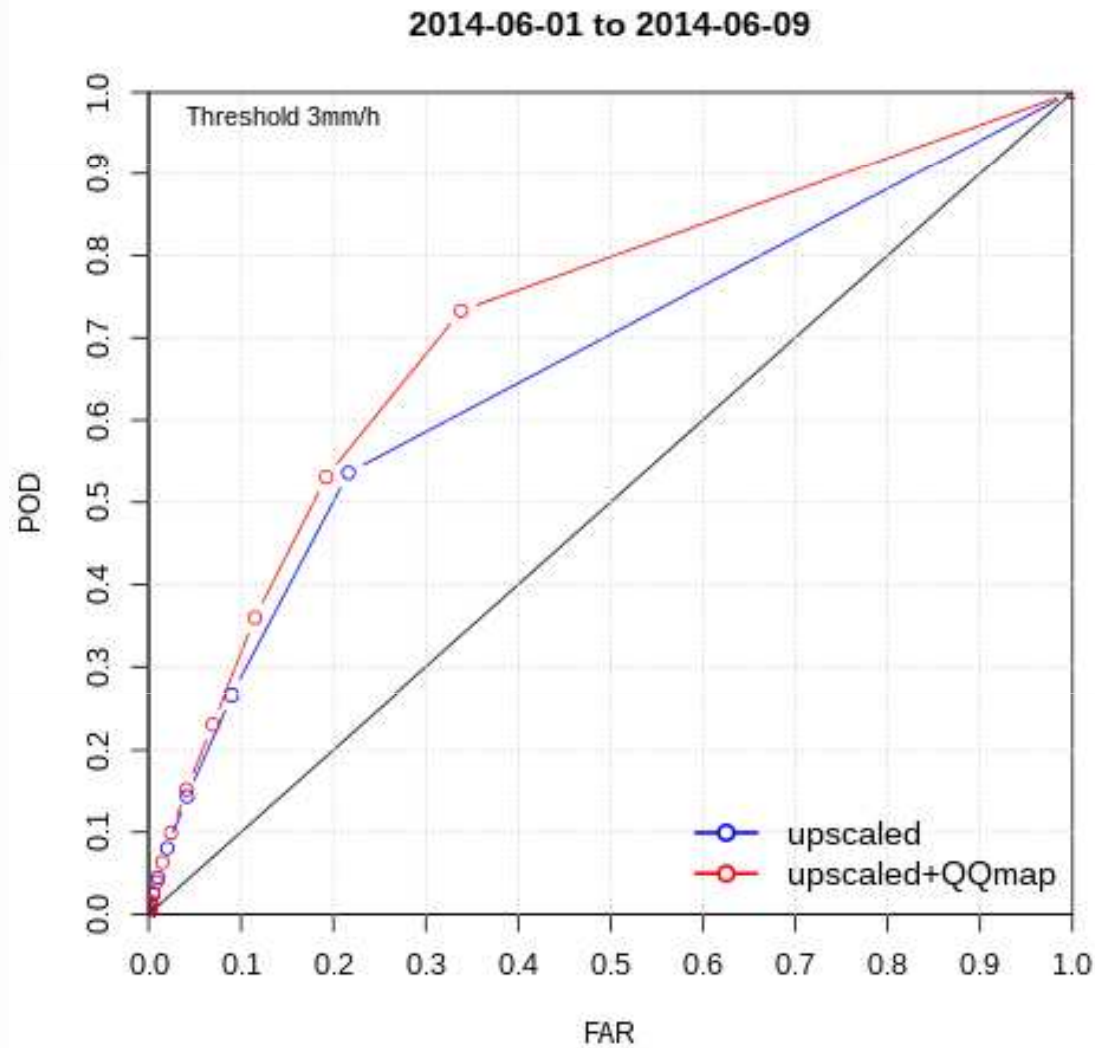


2014/06/01 to 2014/06/28

2014/06/01 to 2014/06/28



Improvements by applying Q2Q mapping on upscaled forecasts



Improvements by the utilisation of additional random members

