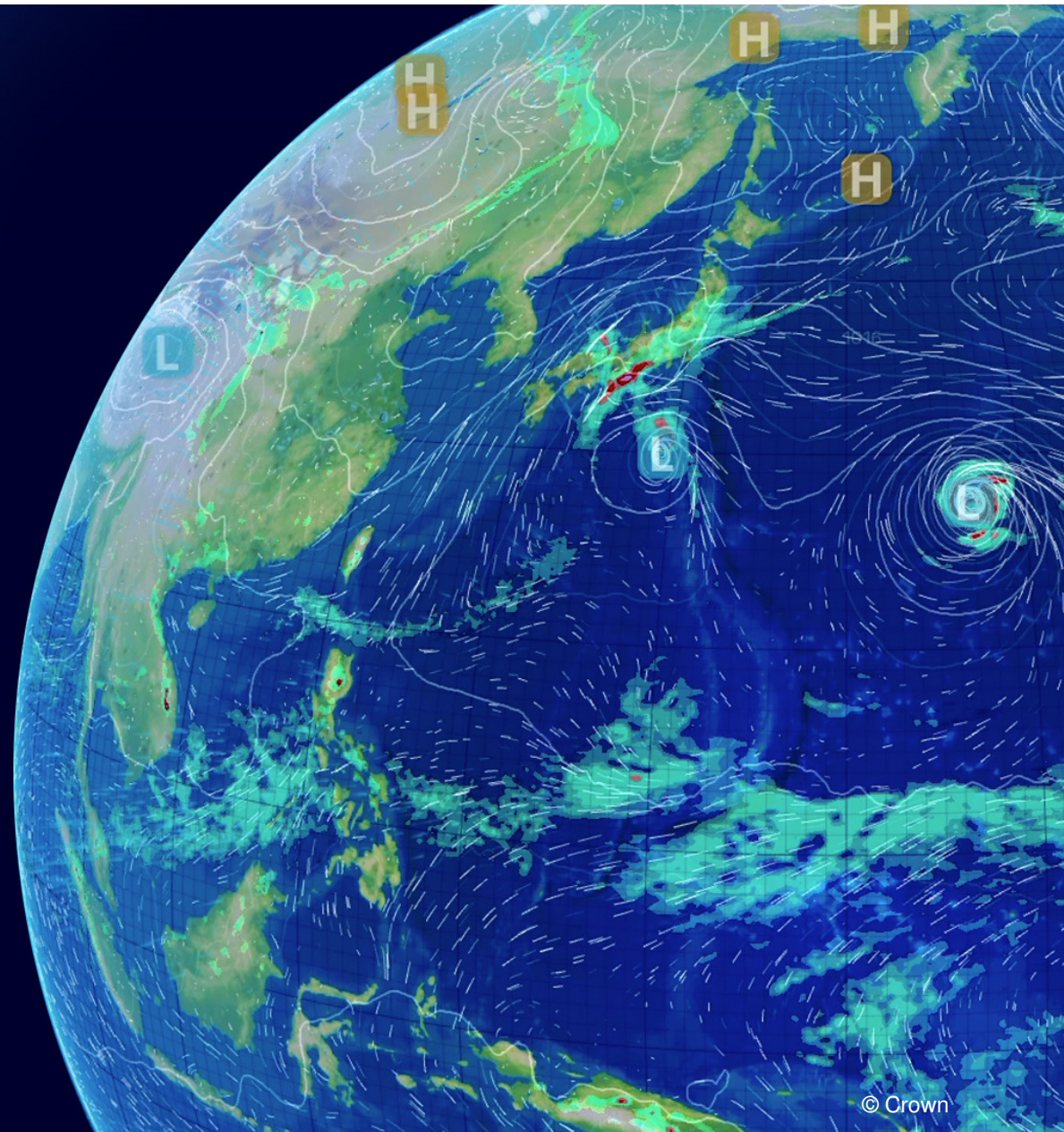


MOGREPS-UK

Susanna Hagelin

EWGLAM/SRNWP, Reading, 3 October 2017



Poster contents

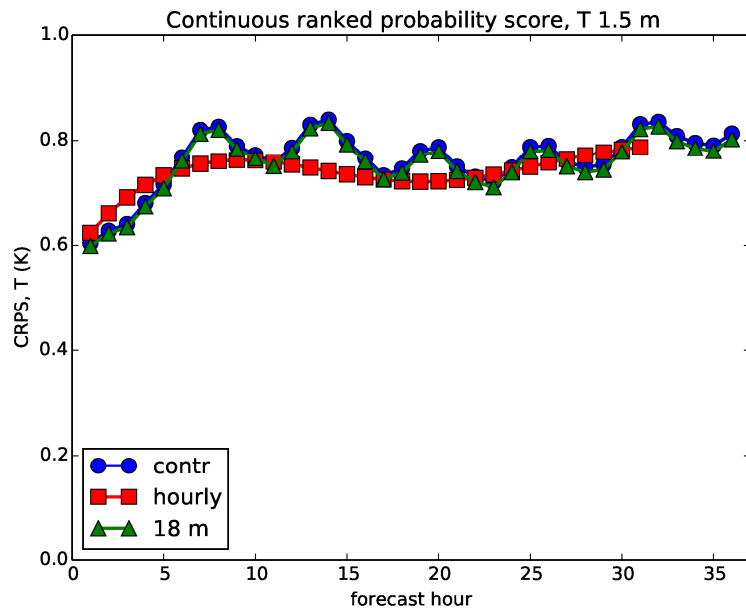
- 1) Recent operational upgrades to MOGREPS-UK
- 2) Early results from running an hourly ensemble
- 3) Surface perturbations (A. McCabe)

Parallel suite upgrades

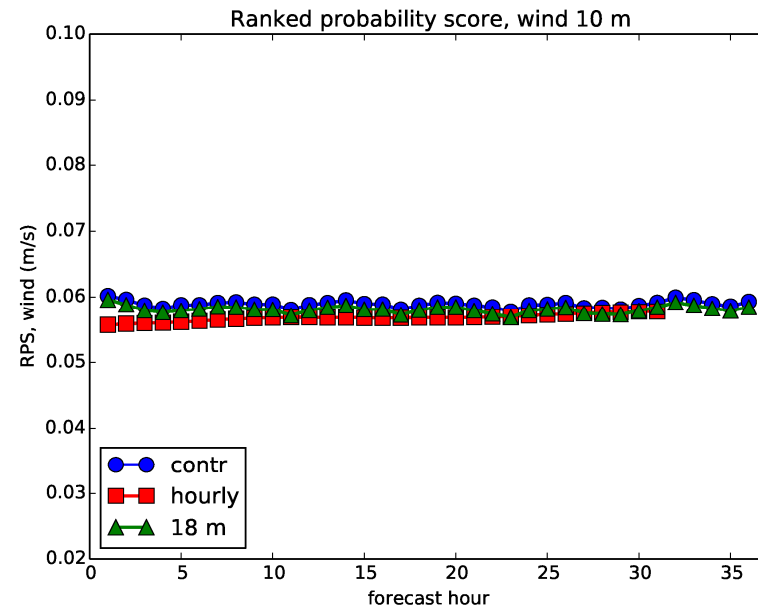
- Two parallel suites (almost) since last EWGLAM/SRNWP meeting
- OS 39 – July 2017: Mostly technical upgrades needed to adapt to
 - higher resolution in the global ensemble
 - UKV running hourly 4DVar
- PS 40 (starts later this month)
 - More technical changes, use IAU to add perturbations -> increased spread

Hourly ensemble

Run small ensemble hourly and time-lag over a 6 hour window



CRPS T 1.5 m



RPS wind 10 m

Surface perturbations (A. McCabe)

- Extend existing Random Parameter scheme to land-surface parameters
- Variations in soil moisture
- Combining with existing RP scheme and stochastic boundary layer parametrisation improves the verification scores

