

Microphysics Complexity and Squall Line Simulations

Kwinten Van Weverberg¹, Andy Vogelmann¹,
Hugh Morrison², Jason Milbrandt³

9th SRNWP-Workshop on Nonhydrostatic Modelling
Bad Orb, 16-18 May 2011

¹ Brookhaven National Laboratory, Upton, NY

² National Center for Atmospheric Research, Boulder, CO

³ Environment Canada

BROOKHAVEN
NATIONAL LABORATORY

a passion for discovery



What Level of Complexity is Needed?

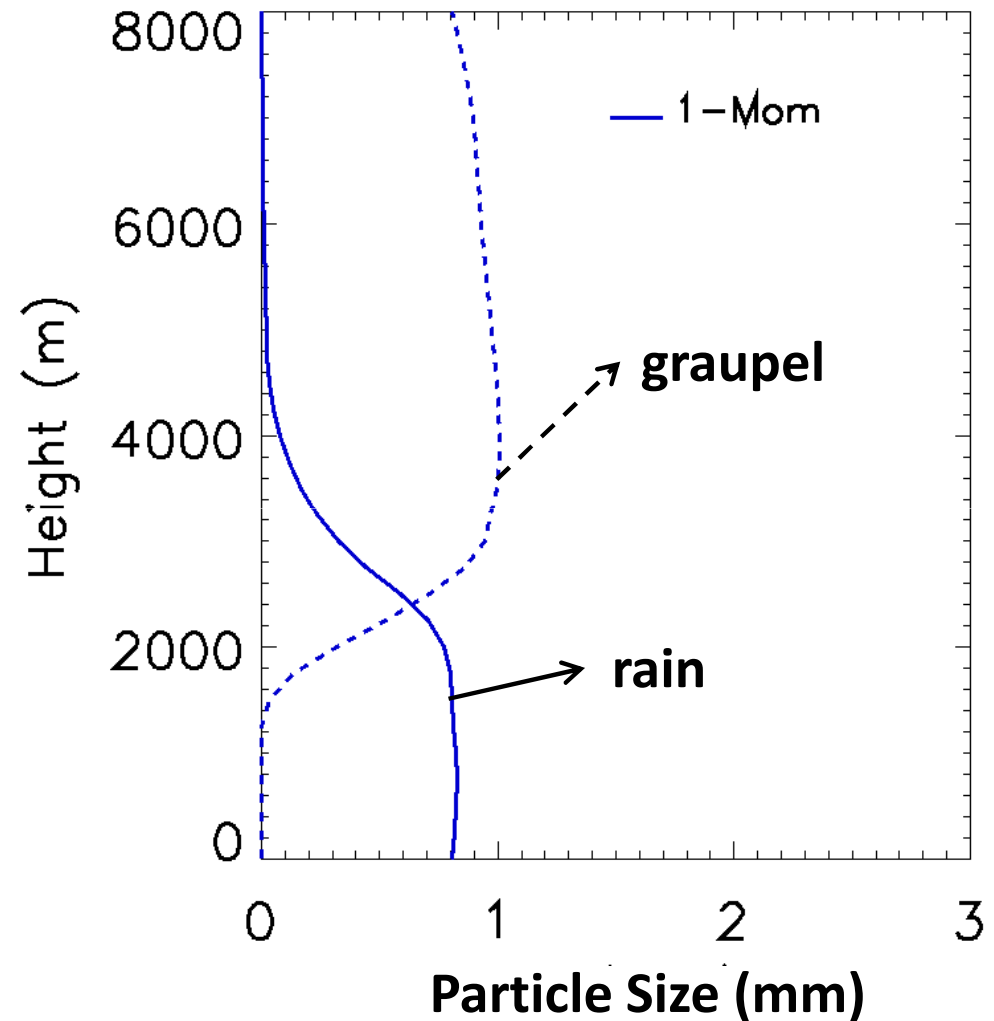
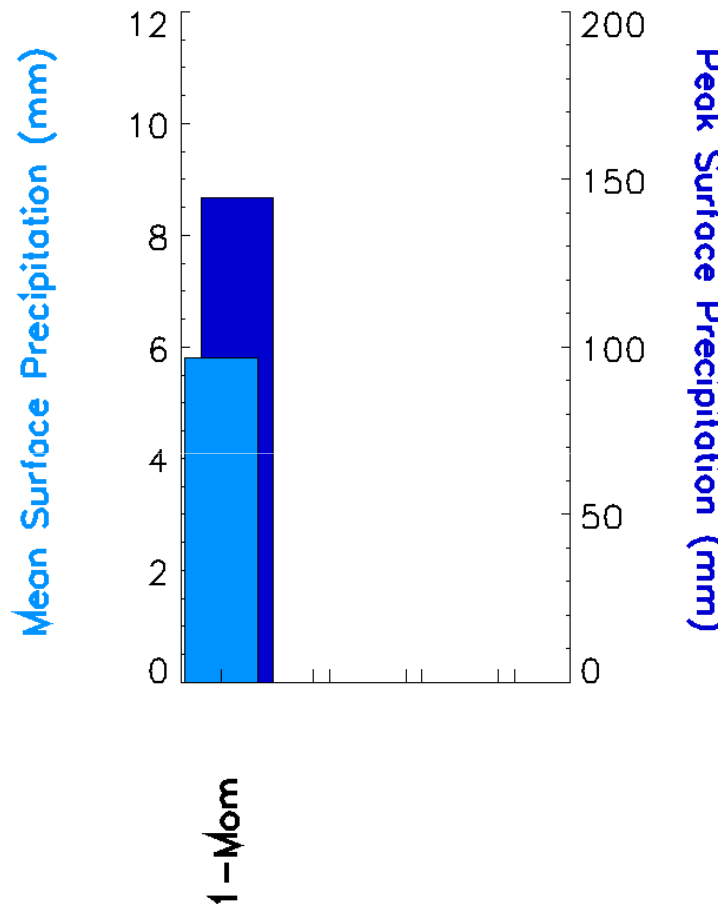
Microphysics sensitivity simulations of 2D-squall line using WRFV3.2:

- How sensitive are simulations to level of complexity?
 - Number of predicted moments for each hydrometeor
 - Treatment of rimed ice species (graupel/ hail)
- What determines difference between equally complex models?
 - Morrison versus Milbrandt 2-Moment schemes

Number of predicted moments

Precipitation extremes sensitive to # predicted moments

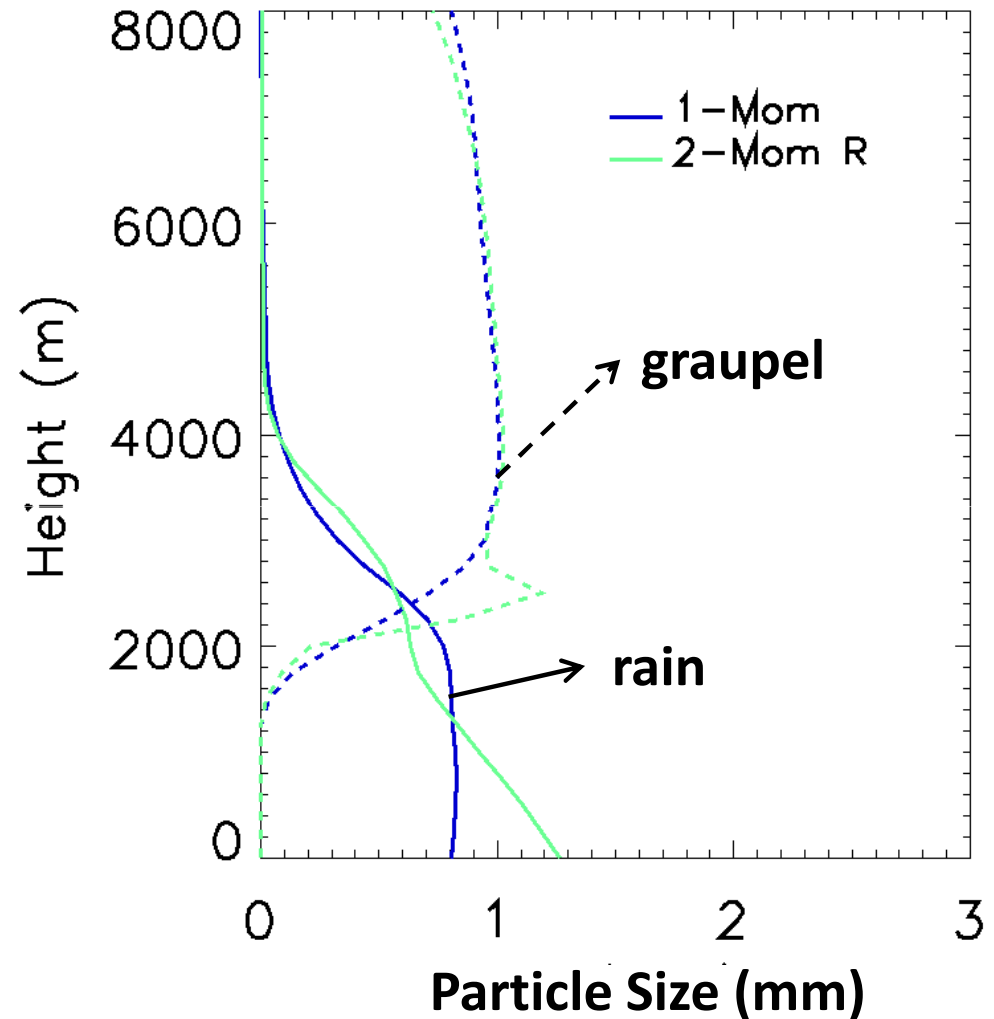
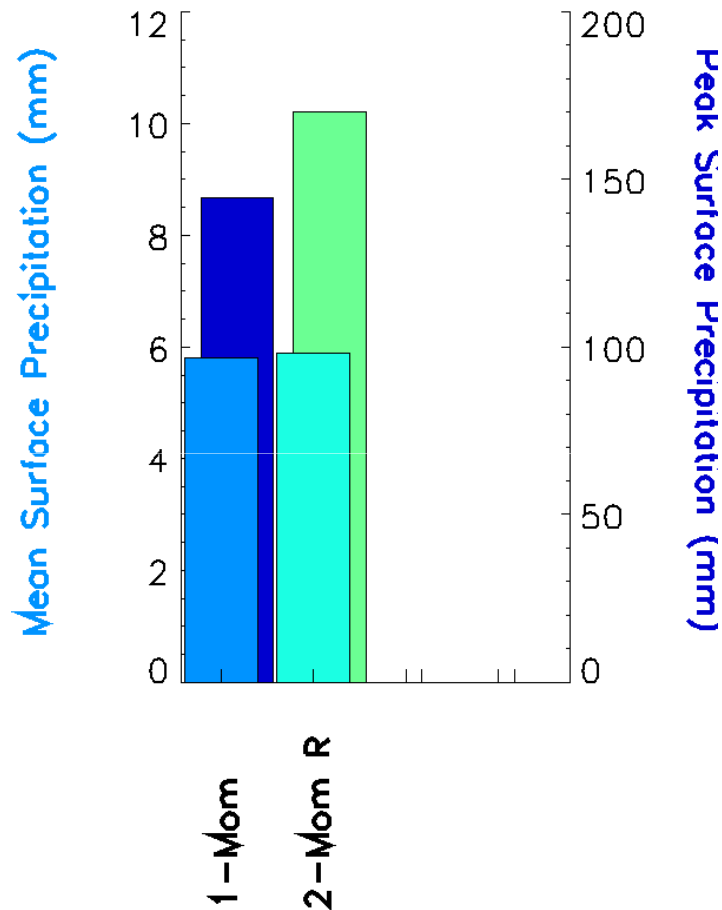
- large drops: faster fallout and less evaporation



Number of predicted moments

Precipitation extremes sensitive to # predicted moments

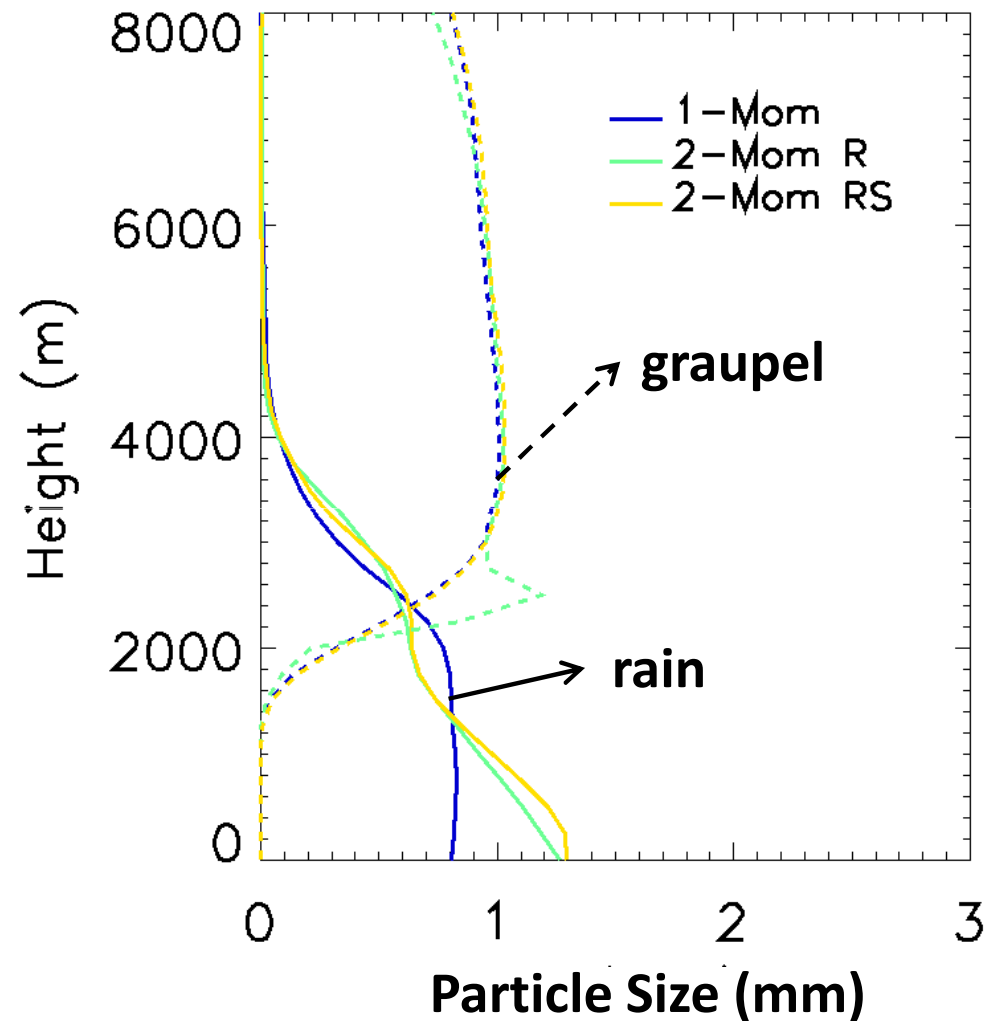
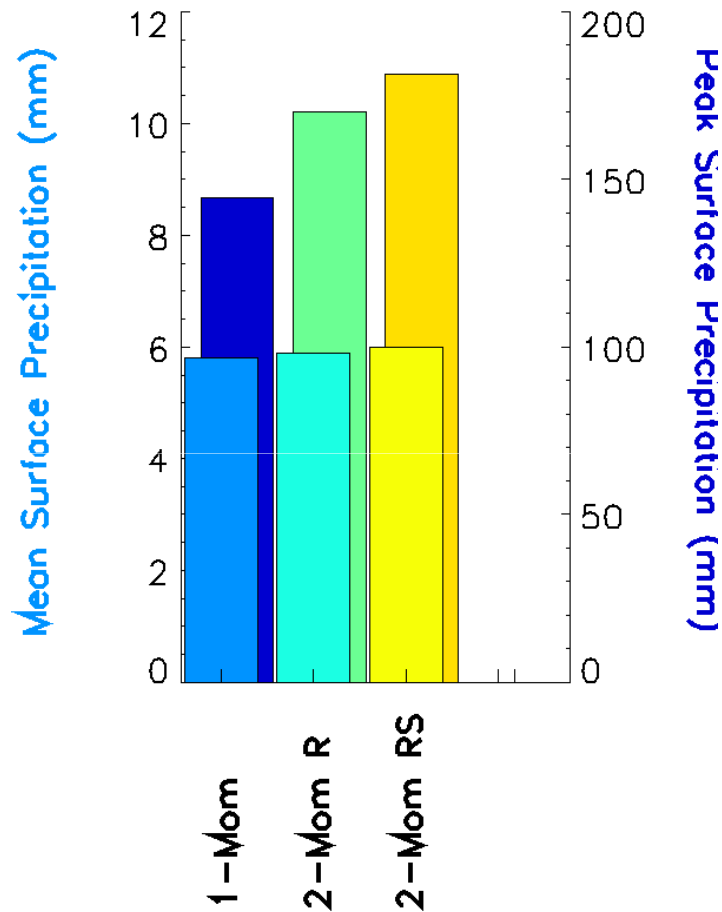
- large drops: faster fallout and less evaporation



Number of predicted moments

Precipitation extremes sensitive to # predicted moments

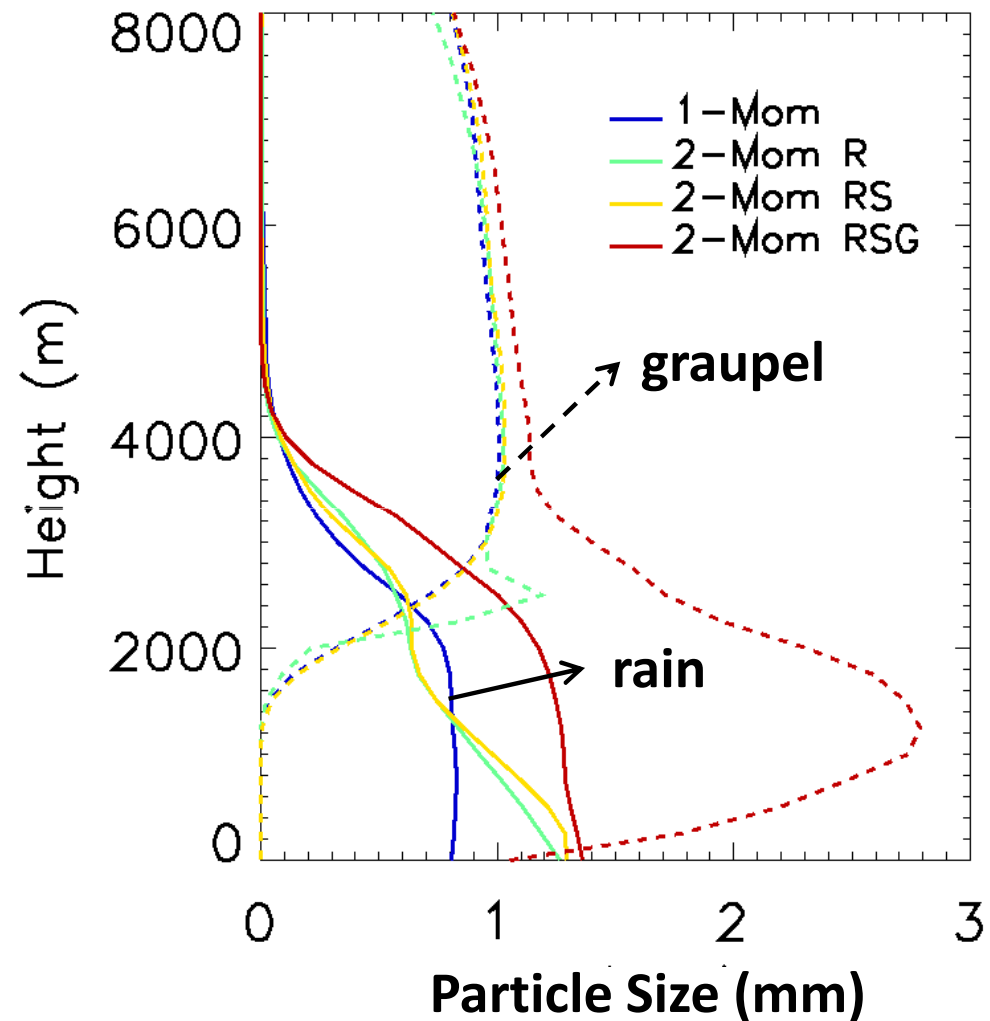
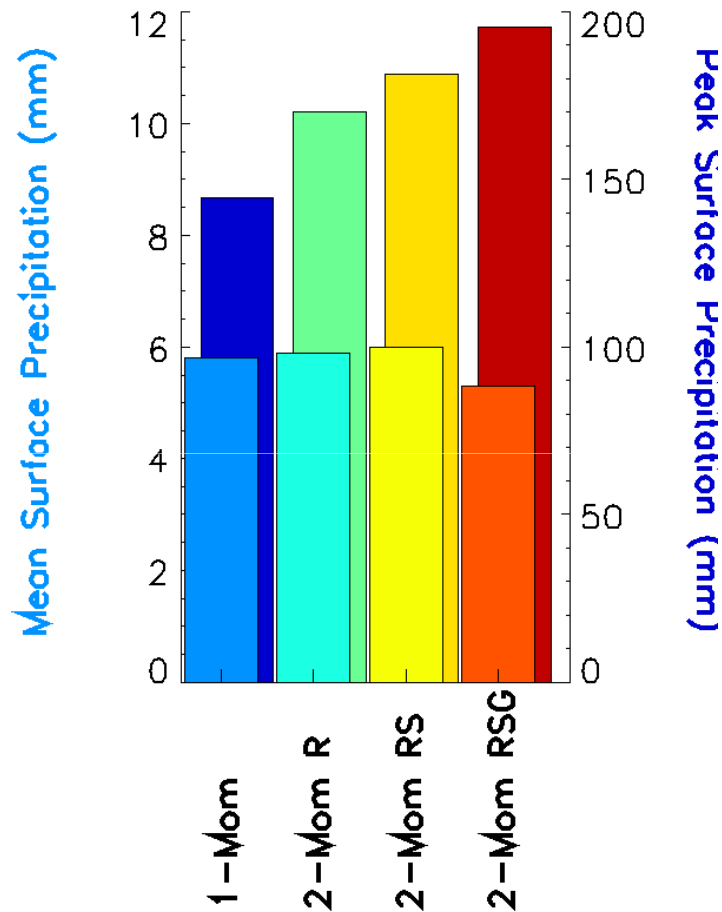
- large drops: faster fallout and less evaporation



Number of predicted moments

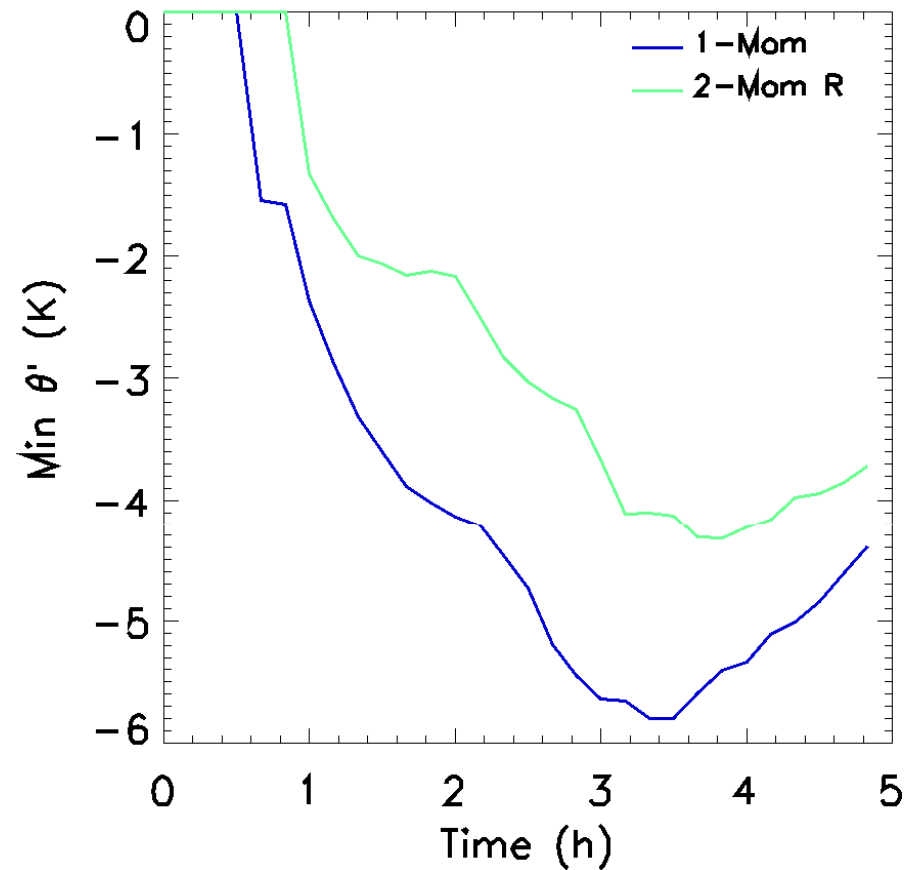
Precipitation extremes sensitive to # predicted moments

- large drops: faster fallout and less evaporation



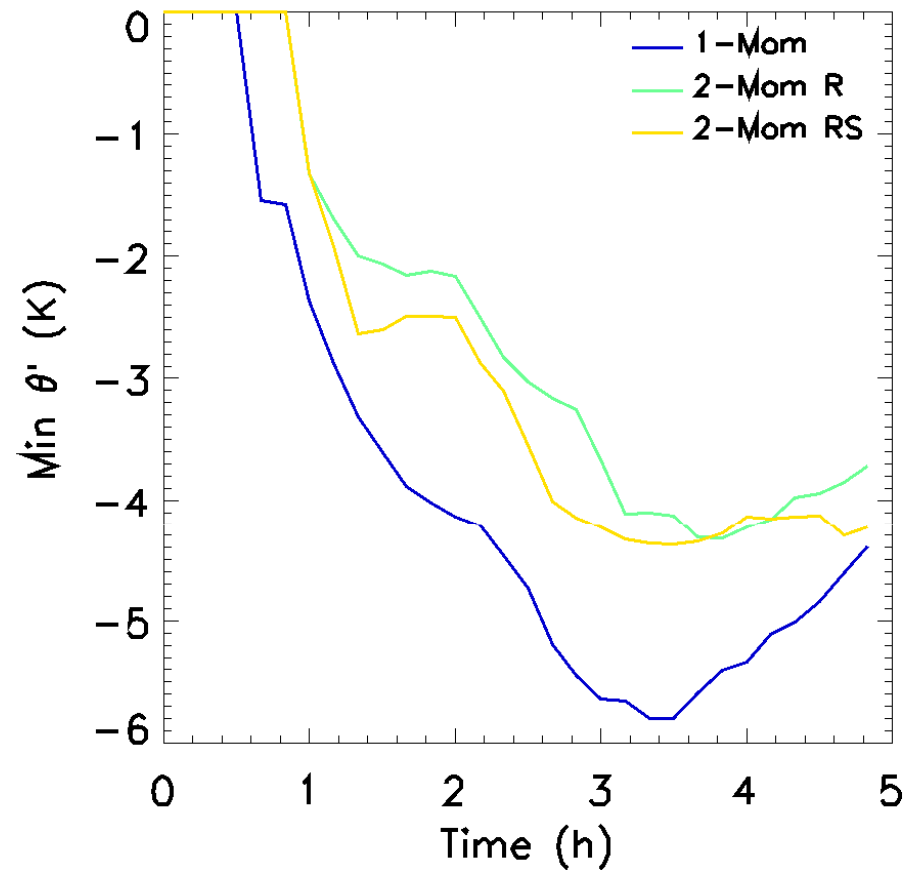
Number of predicted moments

Cold pools sensitive to # predicted moments



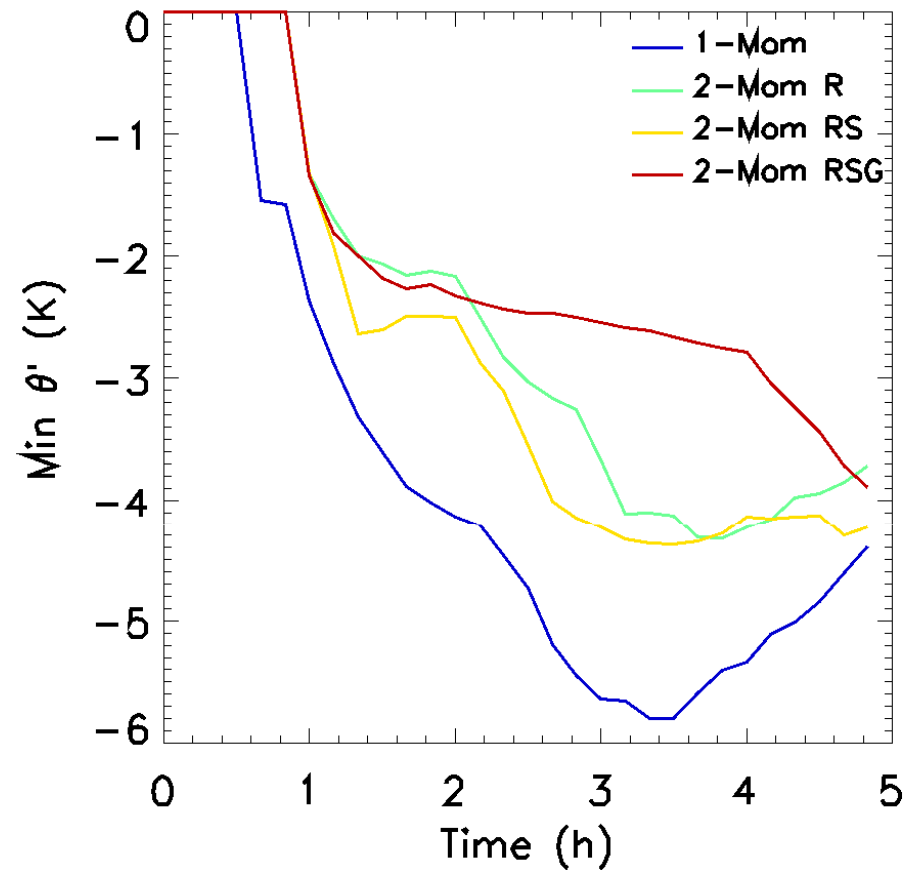
Number of predicted moments

Cold pools sensitive to # predicted moments



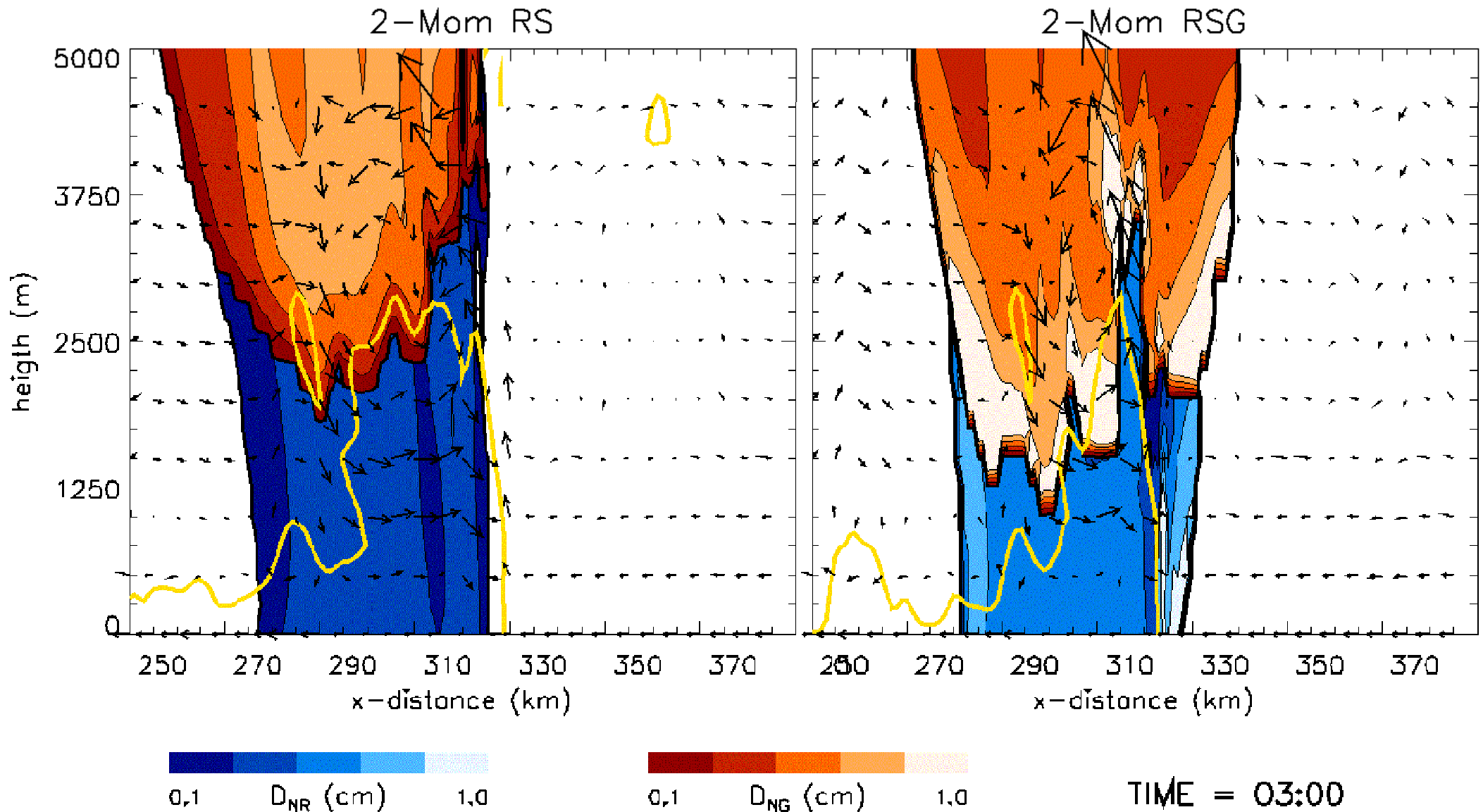
Number of predicted moments

Cold pools sensitive to # predicted moments



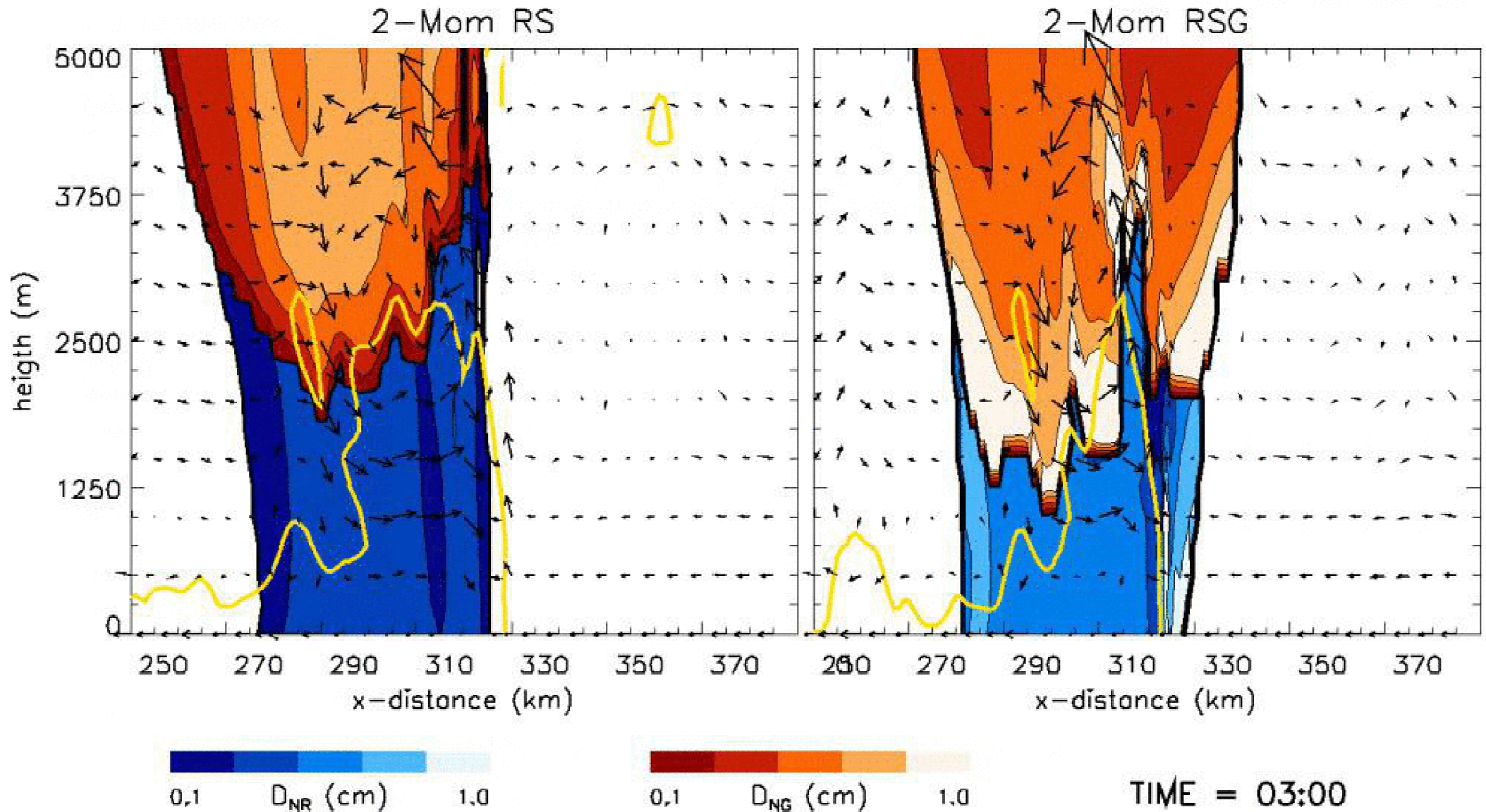
Number of predicted moments

Cold pools sensitive to # predicted moments



Number of predicted moments

Cold pools sensitive to # predicted moments

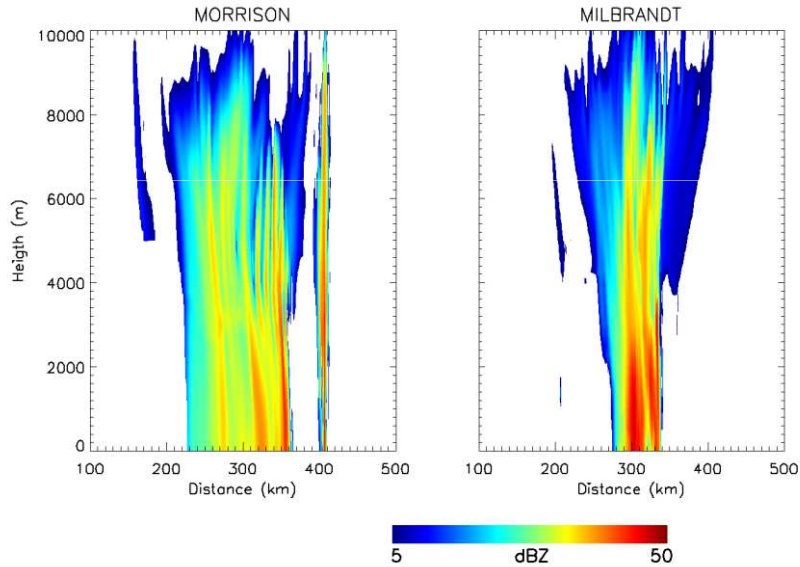
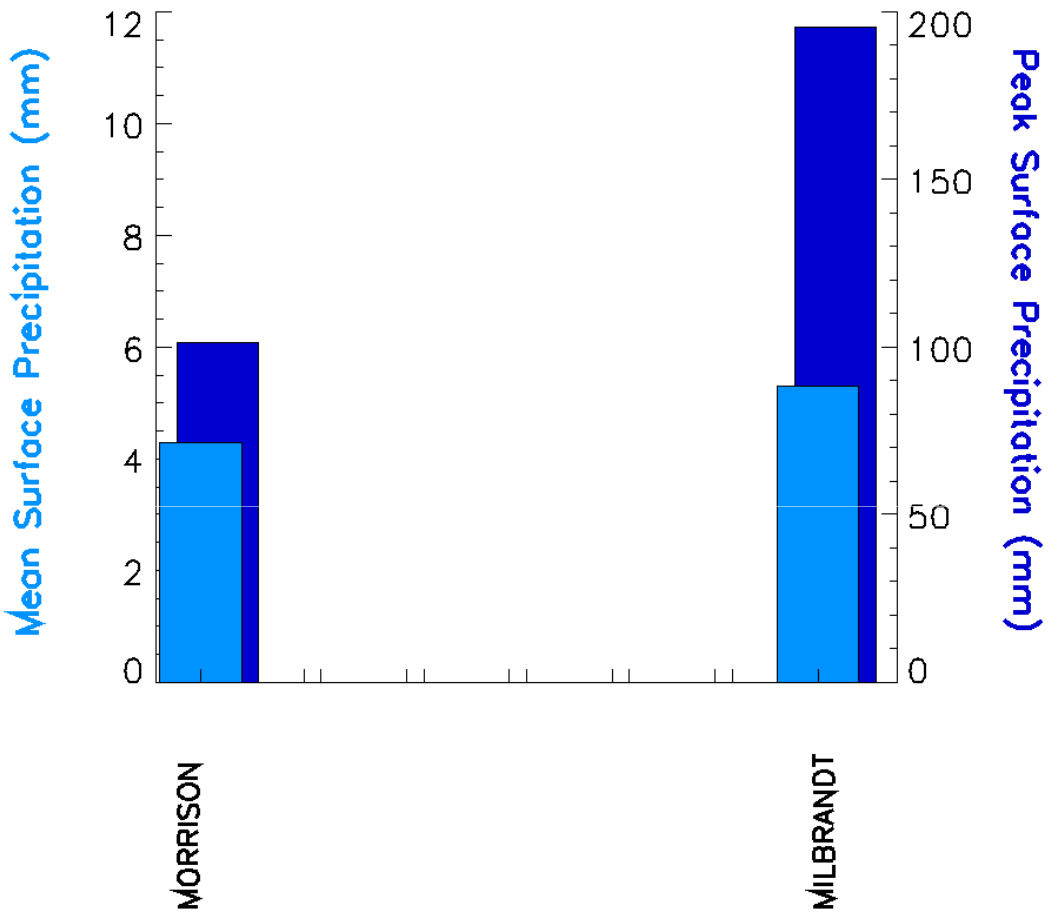


Differences Milbrandt - Morrison

Differences between Morrison and Milbrandt:

Morrison

- Morrison warm rain
- Morrison ice growth
- Morrison collection



Differences Milbrandt - Morrison

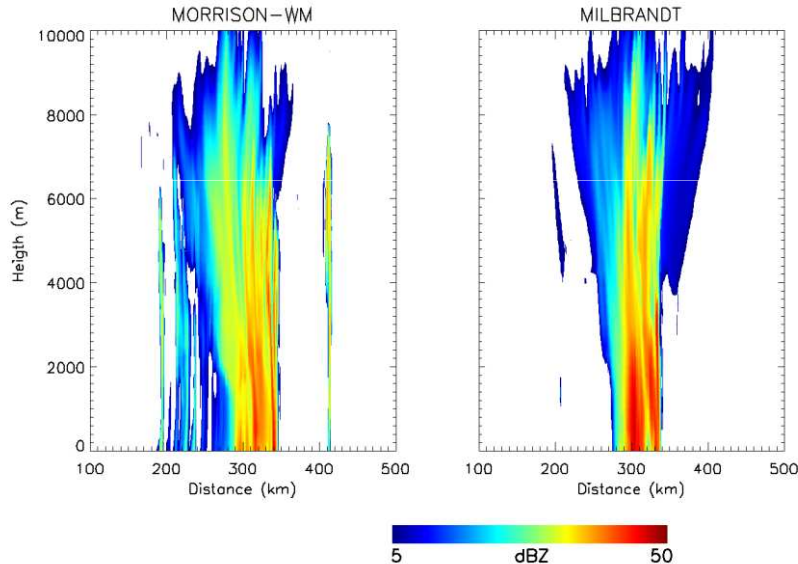
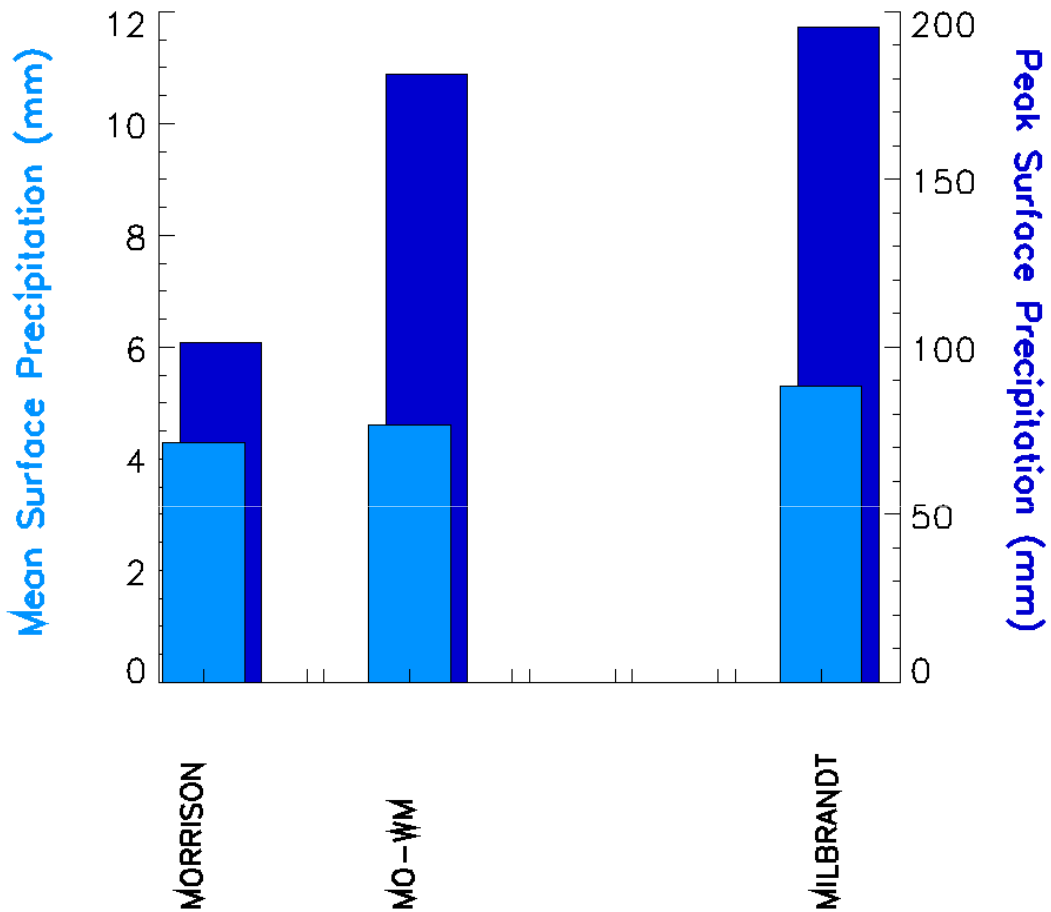
Differences between Morrison and Milbrandt: warm rain

Morrison-WM

Milbrandt warm rain

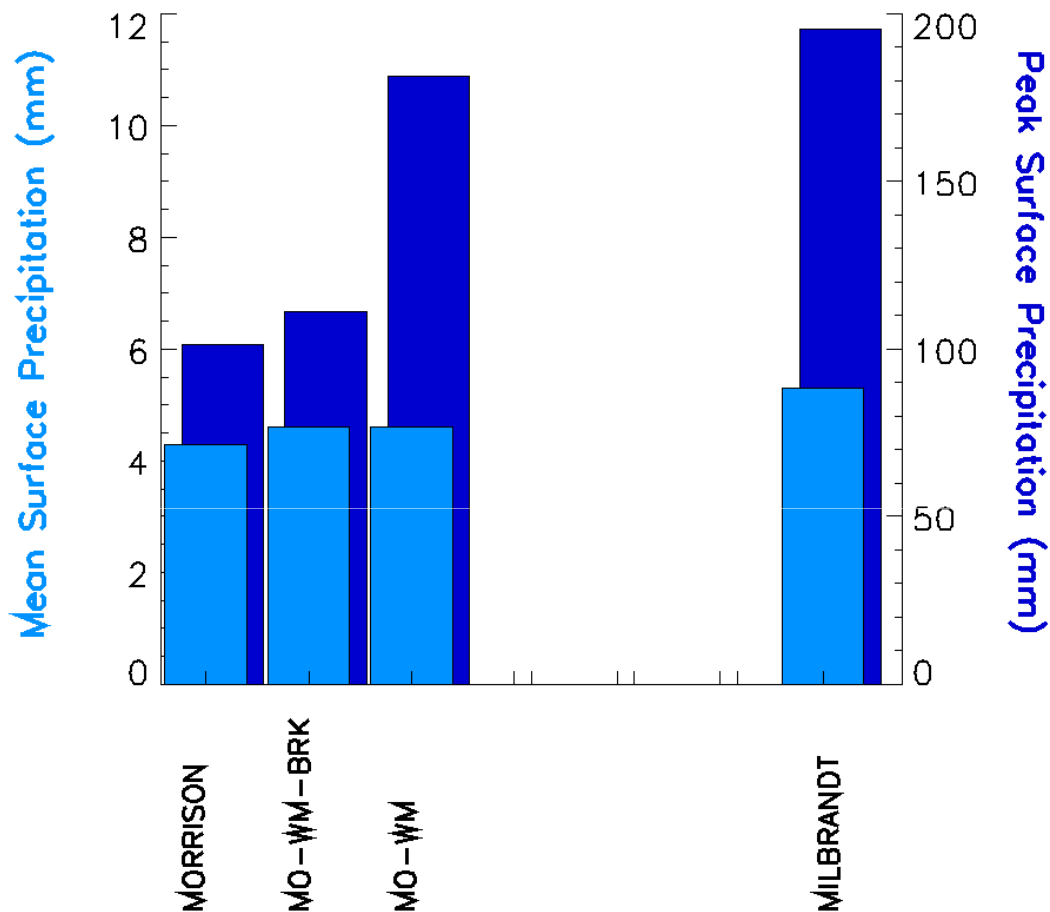
Morrison ice growth

Morrison collection



Differences Milbrandt - Morrison

Differences between Morrison and Milbrandt:
warm rain (except for breakup)

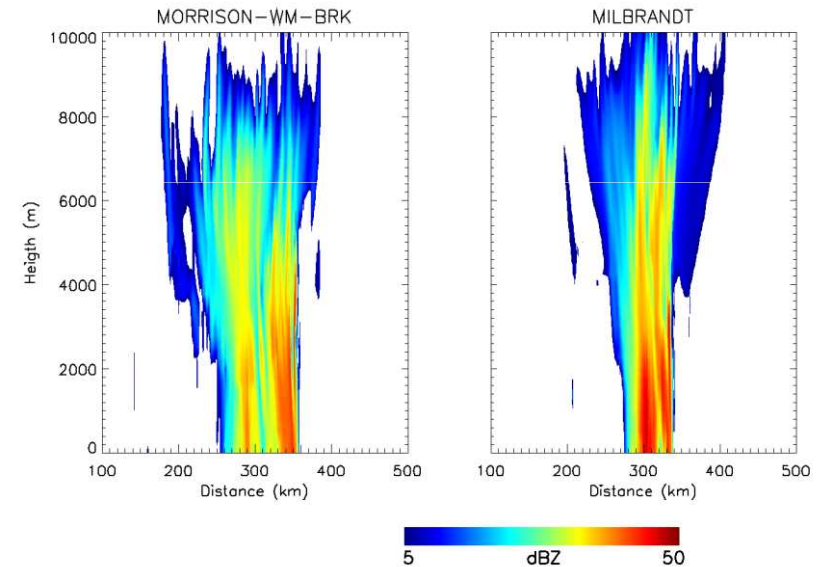


Morrison-WM-BRK

Milbrandt warm rain

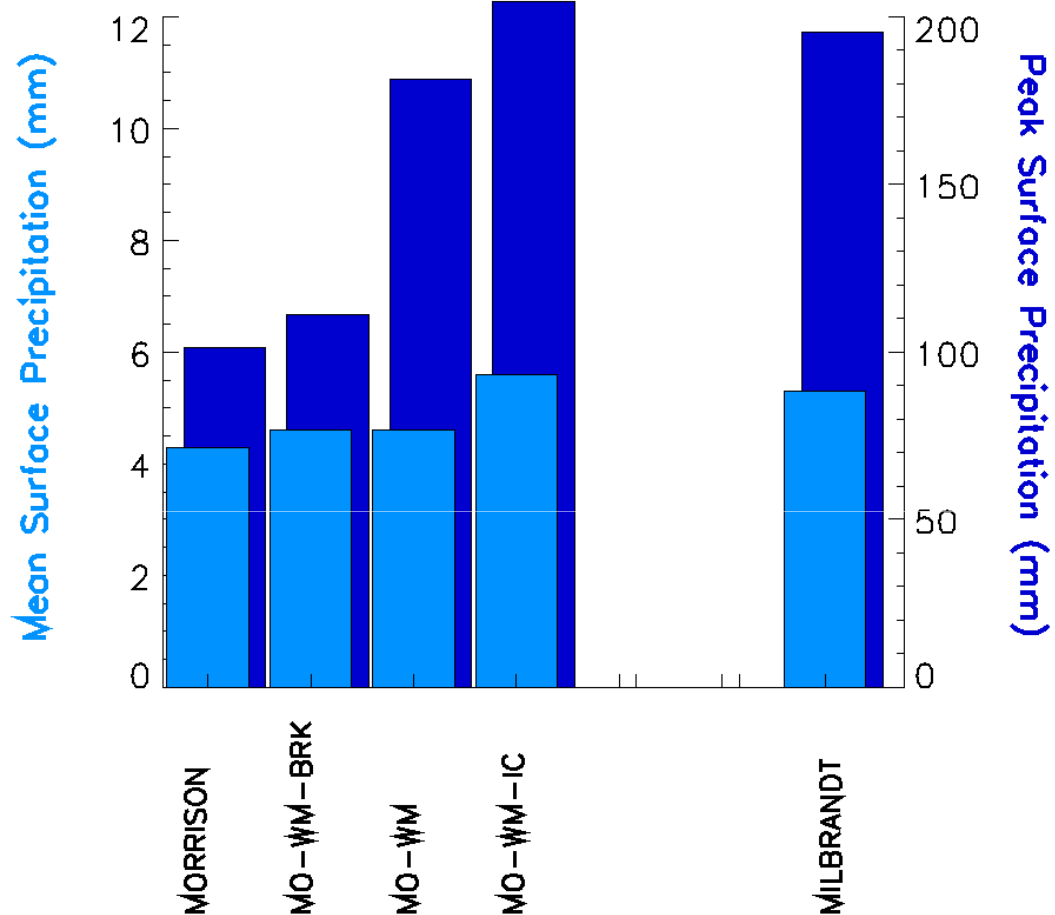
Morrison ice growth

Morrison collection



Differences Milbrandt - Morrison

Differences between Morrison and Milbrandt:
Ice growth

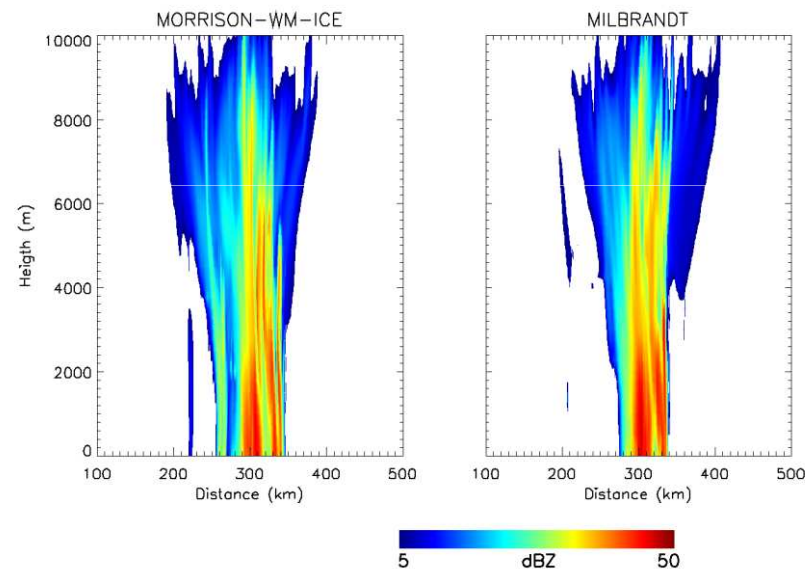


Morrison-WM-ICE

Milbrandt warm rain

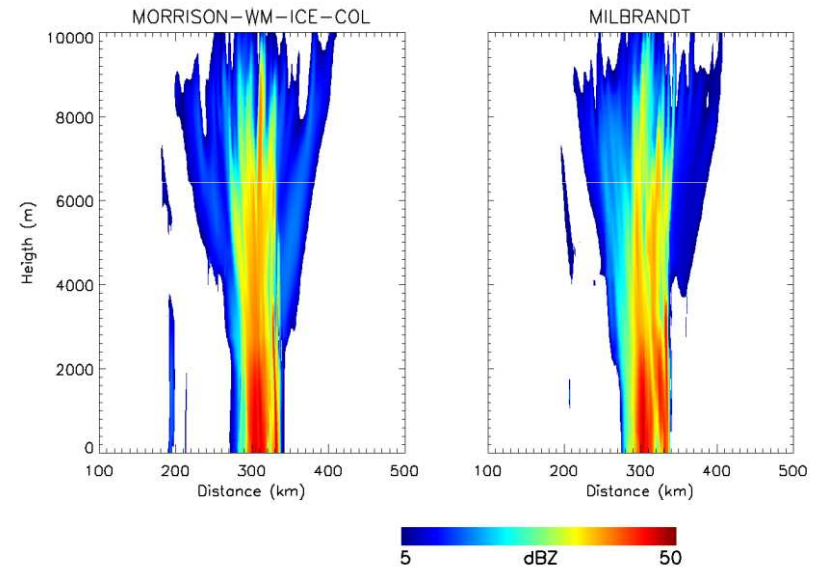
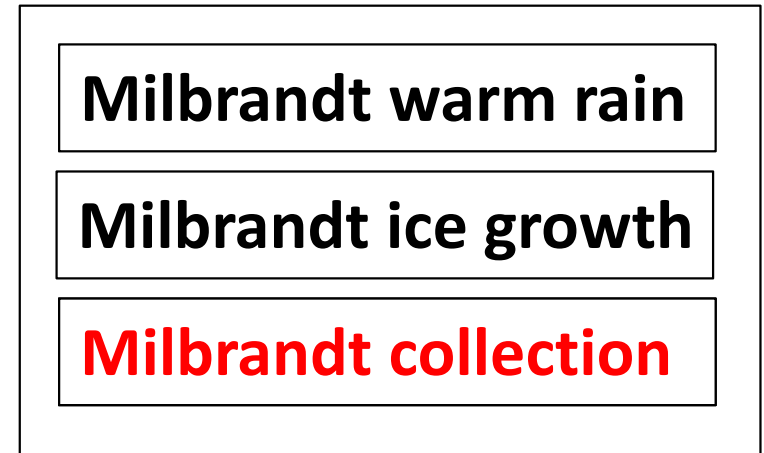
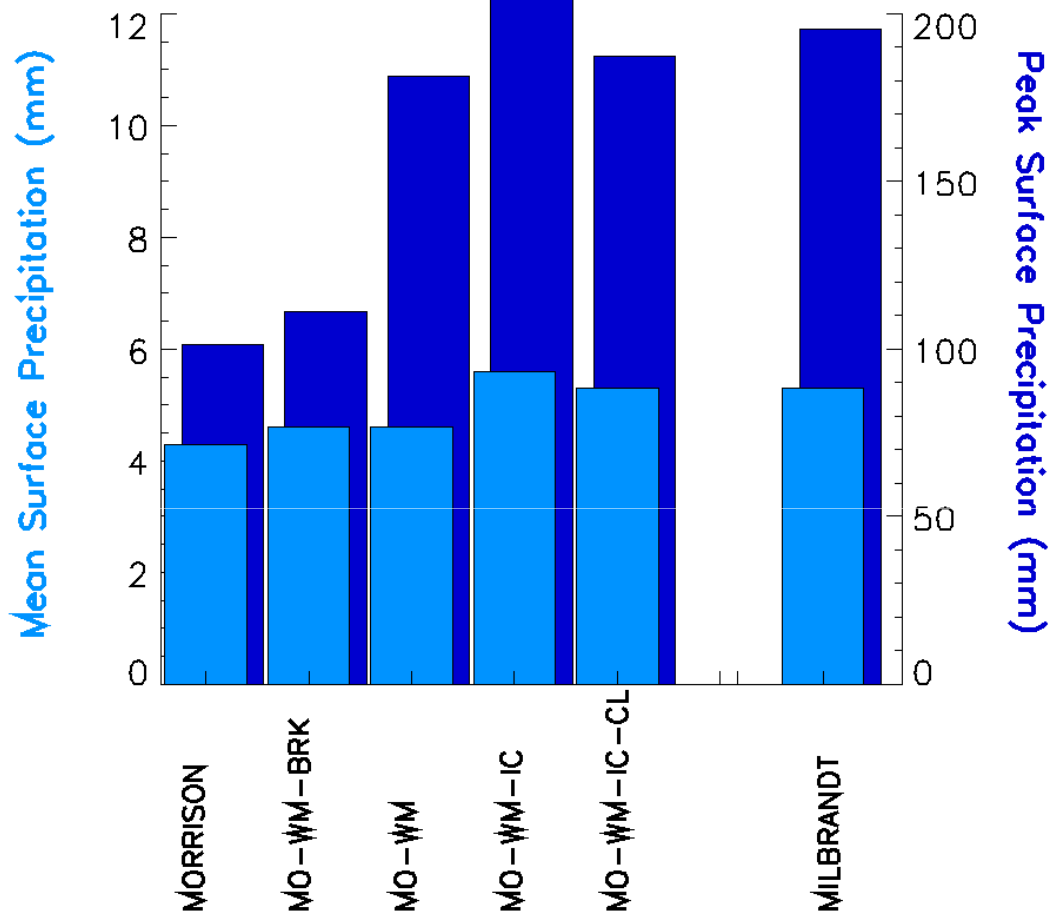
Milbrandt ice growth

Morrison collection



Differences Milbrandt - Morrison

Differences between Morrison and Milbrandt: Morrison-WM-ICE-COL Collection



Conclusions

- Precipitation extremes sensitive to number of predicted moments of *all* hydrometeors and to breakup
 - Size sorting, drop sizes and evaporation determine extremes

Conclusions

- Precipitation extremes sensitive to number of predicted moments of *all* hydrometeors and to breakup
 - Size sorting, drop sizes and evaporation determine extremes
- Precipitation less sensitive to treatment of rimed ice species compared to previous studies
 - Uncertainty of hail to graupel conversion in schemes with both hail and graupel

Conclusions

- Precipitation extremes sensitive to number of predicted moments of *all* hydrometeors and to breakup
 - Size sorting, drop sizes and evaporation determine extremes
- Precipitation less sensitive to treatment of rimed ice species compared to previous studies
 - Uncertainty of hail to graupel conversion in schemes with both hail and graupel
- Breakup, snow growth and graupel sublimation explain most of the differences between Milbrandt and Morrison
 - Need for observations on drop sizes and ice growth mechanisms
 - Need for focus on conversion term formulations for model improvement

Conclusions

- Precipitation extremes sensitive to number of predicted moments of *all* hydrometeors and to breakup
 - Size sorting, drop sizes and evaporation determine extremes
- Precipitation less sensitive to treatment of rimed ice species compared to previous studies
 - Uncertainty of hail to graupel conversion in schemes with both hail and graupel
- Breakup, snow growth and graupel sublimation explain most of the differences between Milbrandt and Morrison
 - Need for observations on drop sizes and ice growth mechanisms
 - Need for focus on conversion term formulations for model improvement
- *Up next:*
 - Bringing in observations (MC³E, NEXRAD, Dual-Pol, Disdrometers)